

# **Children and Young People's Plan Review: 2009**

## **Annexes**

### **Containing Appendices 1-6**

## Contents

<b>Appendix 1: How we developed the children and Young people's Plan: Every Child Matters</b>	Page 3
<b>Appendix 2: County Wide and Local Activity that supports the achievement of our priorities</b>	Page 13
<b>Appendix 3: Financial Resources</b>	Page 27
<b>Appendix 4: Performance Management Arrangements</b>	Page 33
<b>Appendix 5: Narrowing the gap data table</b>	Page 60
<b>Appendix 6: Draft Action Plan from CYPP Review 2009</b>	Page 61

## **Appendix 1: How we developed the children and Young people's Plan: Every Child Matters**

The Trust's purpose is to make sure that all children's services work together to bring into effect the five national outcomes for children and young people set out in Every Child Matters:

- Be healthy
- Stay safe
- Enjoy and achieve
- Make a positive contribution
- Achieve economic well being

Within this overarching framework the Trust identified 8 priorities for action, things that we believed we could improve if we all worked together.

The eight priorities support and complement the five national outcomes, but place the plan within the context of being a child or young person growing up in Kent today.

### **Key Influences:**

The 8 priorities and underpinning outcomes and activities were established through extensive analysis and consultation on the needs of children and families in Kent. The key influences that shaped the plan continue to drive activity and play an integral part of the 2009 review. They include:

- **Living in Poverty: Identifying inequality and Narrowing the Gap**
  - Strategic Needs Assessment by Every Child Matters Outcomes (KCT) 2008 and 2009
  - Joint Strategic Needs Assessment (Public Health) 2008

These documents bring together the evidence that some children and young people's outcomes are not as good as their peers. These are children who are not doing as well at school, not enjoying life so much and report being bullied more. They often face poorer health outcomes, are likely to smoke, more commonly suffer from mental illness and less likely to exercise.

Our research showed that the groups most likely to face disadvantage in Kent are:

- Children eligible for free school meals or from low income families
- Children and young people with learning difficulties and disabilities
- Looked after children and care leavers

- Gypsy/Roma and Irish traveller children
- Teenage parents

The needs of these vulnerable groups heavily influenced the actions agreed in the plan.

The current economic downturn has made easing the effects of poverty increasingly relevant as more families face financial difficulty, more children are registered for free school meals and we continue to see differences in the outcomes (particularly educational and health outcomes) achieved by children registered for free school meals and their peers.

The Strategic Needs Assessment found evidence of disadvantage that related to poverty and low income against each priority. As such, tackling child poverty has been agreed as part of the KCT plan as a cross-cutting theme

There is strong evidence suggesting that parents struggling with financial problems and lack of social support are at higher risk of suffering from depression and anxiety. Poor psychological health in pregnancy is strongly associated with social disadvantage. Depression and anxiety have been associated with negative and less developmentally positive interaction with children. Parent's own adult experiences together with a lack of information and education can shape attitudes to and expectations of child behaviour and development. Poverty also has a direct effect on parenting practices by undermining a family's ability to provide education resources. All these factors suggest that parents caring for children in disadvantaged circumstances are likely to need additional family support if they are to protect their children from the effects of disadvantage.

JSNA 2008  
(Abbreviated from Asthana and Halliday 2006)

**Local Context in Kent:  
(Also see the Narrowing the Gap data Table at Appendix 5 )**

- Poverty is more prevalent in certain Districts, in particular Thanet (24%), Swale (21%), Shepway (21%), Dover (18.6%), Gravesham (18.5%) and Canterbury (17.5%) are highlighted as having relatively high numbers of children growing up in circumstances of income deprivation.
- However every District in Kent has pockets of deprivation. At 10%, the levels of children suffering from deprivation (as measured by the proportion eligible for free school meals (FSM)) are lower in Kent than is the case nationally. However, those that are from deprived backgrounds not only achieve significantly poorer educational outcomes than their peers, but the gaps between FSM pupils and the rest are generally larger in Kent than nationally. Further analysis has shown that those localities within Kent that have the lowest levels of deprivation tend to exhibit the largest gaps between those eligible for FSM and their peers.

- **Characteristics of children living in poverty**

- The majority of children living in poverty live in two-parent households (58%).
- The majority of children living in poverty live in households where someone works.
- Many parents of children living in poverty find themselves with a lack of strong social networks.
- As many as 50% of children and young people in Kent who are eligible for free school meals also have special educational needs (SEN), which will clearly impact on attainment levels.

Schools and Children's Centres at the heart of their communities and in close contact with many families are well placed to offer support, advice and signposting to other services that can help.

- **Kent Partnership and the Kent Agreement (Local Area Agreement 2)**

The Kent Children's Trust sits at the heart of multi-agency planning and service delivery for children and young people and their families across Kent. It is a sub group of the Kent Partnership and has lead responsibility for the Kent Agreement priorities that relate to children and young people. These targets, agreed as part of the Kent wide arrangement, are:

- NI 51: Effectiveness of Child and Adolescent Mental Health Services (CAMHS)
- NI 55: Obesity in primary school age children in reception
- NI110: Young people's participation in positive activities
- NI111: First time entrants to Youth Justice System aged 10 -17
- NI117: 16-18 year olds not in employment, education or training (NEET).

The activity planned across the whole of the Kent Agreement will help to reduce the number of children living in poverty or disadvantage in Kent, as will the Vision for Kent, Kent's County wide community strategy which also guides our activities and helps set our priorities. Implementing these county targets and securing partnership commitment to improve well being and life chances for local children and young people will involve liaison with other relevant partnerships in each locality most notably the Local Strategic Partnerships for Kent and the district council areas.

- **Feedback from Children and Young People and their Parents & Carers**

It is our ambition to embed engagement and participation across our services.

- The APA noted as a major strength that children and young people make a positive contribution to both strategic planning and service development and effective strategies are in place to enable them to do so, including the participation of looked after children in their reviews.

- Similarly Inspection reports from District Councils frequently highlight the good work being done in engaging with young people. Positive comments include, “clear understanding of need” “neighbourhood youth forums help young people to shape their local communities”, “proactive and effective in approach to young people”.

Feedback from children and young people and their carers was used to shape the Children and Young People's Plan and continues to influence policy and how services are delivered.

In 2007 over 42,000 and in 2008, over 45,000 children and young people completed the Children and Young people of Kent Survey. Because the survey is so extensive it is a valuable source of information at a local level and is being used by Local Children's Services Partnerships and by schools. Other partner agencies and groups such as Connexions and the Crime and Disorder Reduction Partnership are also finding the survey results helpful to inform their work.

**We will continue to try new ways to ensure we involve children and young people including:**

- Commissioning of “Participate By Right” to develop good participation practice and assist the new Local Children's Services Partnerships to hear the views of children and young people. The aim of Participate By Right is to embed the participation of vulnerable and disadvantaged children and young people, as a norm, in Kent's commissioning, delivery and development and review of children and young people's projects and services.
- Kent Children in Care Council to be set up during 2009
- Development of a young person's and a parent's /carers' reference group to act as a sounding board for the Trust.
- Kent Police are setting up a youth panel to obtain the views of young people.

Through all the feedback undertaken during the last year a number of themes emerged that influenced the plan:

- Not enough things to do in the local area
- Leisure activities are too expensive
- Lack and cost of public transport
- Stigmatisation of all young people when it is only a minority involved in anti-social behaviour
- Fear of people hanging about on the streets
- Relationships with parents
- Preparation for leaving school, learning life skills
- Participation- children and young people want to be involved in decision making in all aspects of their lives

## **External feedback on progress and areas for improvement – The Joint Area Review and Annual Performance Assessment 2008**

The Joint Area Review report published in June 2008 and the Annual Performance Assessment (APA) 2008 published in December 2008 both confirmed that children's services in Kent were good and benefited from outstanding leadership and service management. The strong and consistent record of improvement and partnership working was noted as a key strength. However there is always room for improvement and the JAR highlighted a number of areas for action that were included in the Kent CYPP plan. Progress on the JAR action plan is summarised here:

- Action 1: Disseminate the findings of the JAR to children and young people:  
Agreed method of communication is a poster, which has been distributed to schools across Kent.
- Action 2: Regularly review pathway plans for eligible young people:  
99.7% of plans were reviewed for eligible LAC in March 08; this is an increase from 65% the previous year.
- Action 3: Improve ICT and data collection to support the monitoring and targeting of activity to reduce teenage pregnancy:  
Computers are being installed as part of PCT upgrading programme over this financial year.  
Greater computer access has been achieved and the process is ongoing. All Outreach workers have access to computers. New IT post being recruited to. All GUM clinics have sophisticated systems. New computers are being installed to ensure all clinical sessions have access, this is in progress
- Action 4: Avoid placing young people in adult psychiatric wards:  
Only one under 18 have been admitted to adult wards since September 2008 and this was felt to be clinically appropriate. Regulations are now in place to flag these admissions to commissioners
- Action 5: Improve the supply of specialist CAMHS for children with LDD:  
Some actions have been completed, such as setting up of LD CAMHS Expert Group, but some therapies still to be put in place, and performance data not yet available. 1 of 9 planned specialist therapists has been recruited
- Action 6: Improve the number of LAC receiving annual health checks:  
Actions in place, and marked improvement in data indicator (from 60% to 83%), which is likely to be in line with national rate.
- Action 7: Extend the provision of lead professionals / workers available to support LDD children and their families:  
Activities in place, including Partnership with Parents service, and further Lead Professional and CAF training

- Action 8: Improve the time taken to secure housing adaptations for LDD children:  
Initial mapping has taken place, and a pilot scheme agreed. In order to improve the referral to assessment time two additional Occupational Therapists have been recruited
- Action 9: Improve the accommodation and resources available in alternative education centres  
Pupil Referral Units Capital budget is being used for Alternative Curriculum Provision operated by KCC to improve quality of buildings and resources. Funds are currently allocated to specific capital projects in 3 Alternative Curriculum Pupil Referral Units. All providers have signed a new service level agreement that includes agreed standards of accommodation.

## **How we did the Review**

The Children and Young People's Plan review is built on a needs assessment that addresses all five Every Child Matters Outcomes. The partners of the Kent Children's Trust have worked together to develop a comprehensive understanding of what it is like being a child or young person in Kent and where we need to target partnership activity to improve outcomes for Children and Young People.

Evidence for the needs assessment and the review of the Children and Young People's Plan was drawn from a range of sources including: the needs and perspectives of all children and young people and specific vulnerable groups including the Children and Young People of Kent surveys, information on the partnership's performance against national and local indicators, feedback from external inspections, thematic needs assessments, complaints and other local review and research sources. The Needs Assessment of Every Child Matters Outcomes is complemented by the Joint Strategic Needs Assessment which focuses on children's public health issues, particularly health inequalities.

The review was also informed by monitoring returns from lead officers describing the progress and impacts of key actions in the Kent Children and Young People's Plan and reviews from Local Children's Services Partnership managers reporting on activity against local children and young people's plans.



## **Kent Children's Trust Model and Arrangements**

The Kent Children's Trust (KCT) was established in 2006, since that time the partnership has evaluated the 4 pathfinder local partnerships and in September 2008 implemented a comprehensive network of 23 local partnerships to ensure that the partnership can respond more effectively to the needs of children and young people across the area.

Addressing the Every Child Matters: Change for Children agenda entails significant long-term multi-agency changes to improve the lives of children, young people and families. National reports from the Audit Commission (such as "Are we there yet"), the Government's action plan in response to Lord Laming's review of child protection, several mandated strategies and programmes from the DCSF among other departments, 14-19 Reforms/Apprenticeships (National Apprenticeship Scheme), the Skills, Children and Learning bill and the anticipated legislative changes to the statutory powers of Children's Trusts, all point to the scale of change.

"Are We There Yet? Improving Governance and Resource Management in Children's Trusts" focuses on:

- Governance and accountability arrangements for children's trusts
- The way resources are used by children's trusts
- How children's trusts relate to local strategic partnerships (LSPs) and local area agreements (LAAs).

It offers a good practice governance model for children's trusts which supports the arrangements being developed in Kent. Kent will continue to review its partnership arrangements using the outcomes achieved for children and young people as our measure of success. A process of continuous assessment and evaluation against the ECM outcomes framework will be our main mechanism for doing this and we will publish a position statement in our annual review of progress in achieving the Kent CYPP.

As the Children's Services Authority for Kent, Kent County Council has taken a lead role in establishing children's trust arrangements at strategic and local levels. The purpose, membership and governance framework for the KCT are set out in Governance Framework and Partnership Agreement available at: [http://www.kenttrustweb.org.uk/Children/kct\\_draftframework.cfm](http://www.kenttrustweb.org.uk/Children/kct_draftframework.cfm)

### **Partners**

The Kent Children's Trust includes partners with a statutory duty to co-operate through the Children Act 2004 together with other partners working to improve the life chances and well-being of children and young people. The services with a statutory duty to cooperate are:

- Local Authorities
- Strategic Health Authorities and Primary Care Trusts
- District Councils
- The Police Authority and Chief Officer
- The Probation Board
- Connexions Partnership
- The Youth Offending Team
- The Strategic Health Authority and PCTs
- The Learning and Skills Council and related service providers
- Schools, Academies, sixth form and Further Education colleges
- Job Centre Plus

In Kent the KCT also includes representatives from the voluntary and community sector and faith groups. Full KCT membership is available at [http://www.kenttrustweb.org.uk/Children/kct\\_membership.cfm](http://www.kenttrustweb.org.uk/Children/kct_membership.cfm)

We believe the KCT Board must maintain strong relationships with the Kent Safeguarding Children's Board, the Youth Justice Board, Local Strategic Partnerships and KDAAT. This is fundamental to our success. We will be appointing an independent chair to the Kent Safeguarding Board this year in line with the Lord Laming recommendations and the board will lead the implementation of any actions required by the Government to respond to Lord Laming's findings

The Kent Children's Trust has agreed a structure to drive forward effective evidence based commissioning across the area. In support of these developments the partnership has also agreed a commissioning framework and comprehensive performance management arrangements. The local partnerships commissioning work is being supported by a virtual commissioning team who have produced comprehensive guidance on all the key stages of commissioning and are in the process of evaluating current progress (with support from the national Commissioning Support Programme) to inform the development of a comprehensive commissioning plan.

The Children and Young People's plan 2008-2011 was updated last year and is underpinned by a portfolio of thematic strategies that guide the operational work on priorities of the plan.

The work of the Local Strategic Partnerships and Community Safety Partnerships across Kent are acknowledged as having a significant, supportive role in the outcomes for children and young people. Planning supports activity at all levels with Local Strategic Partnerships having Community Plans, District's having young people's action plans and Local Children's Services Partnerships having local Children and Young People's Plans in place. The CYPP 2008-11 was reflected in the Strategic Commissioning Plans of Eastern Coastal Kent and West Kent PCTs, but the health components are under detailed review in light of the Government's launch of Healthy lives, Brighter Futures, the strategy for children and young people's health (DCSF/DoH).

We are in the process of initiating a review of the resources that underpin our strategic and local plans to identify opportunities for the full range of partnership agreements and mechanisms for strengthening commissioning across the Kent Children's Trust. This review will also evaluate how effective and efficient some of the key preventative and early intervention services have been.

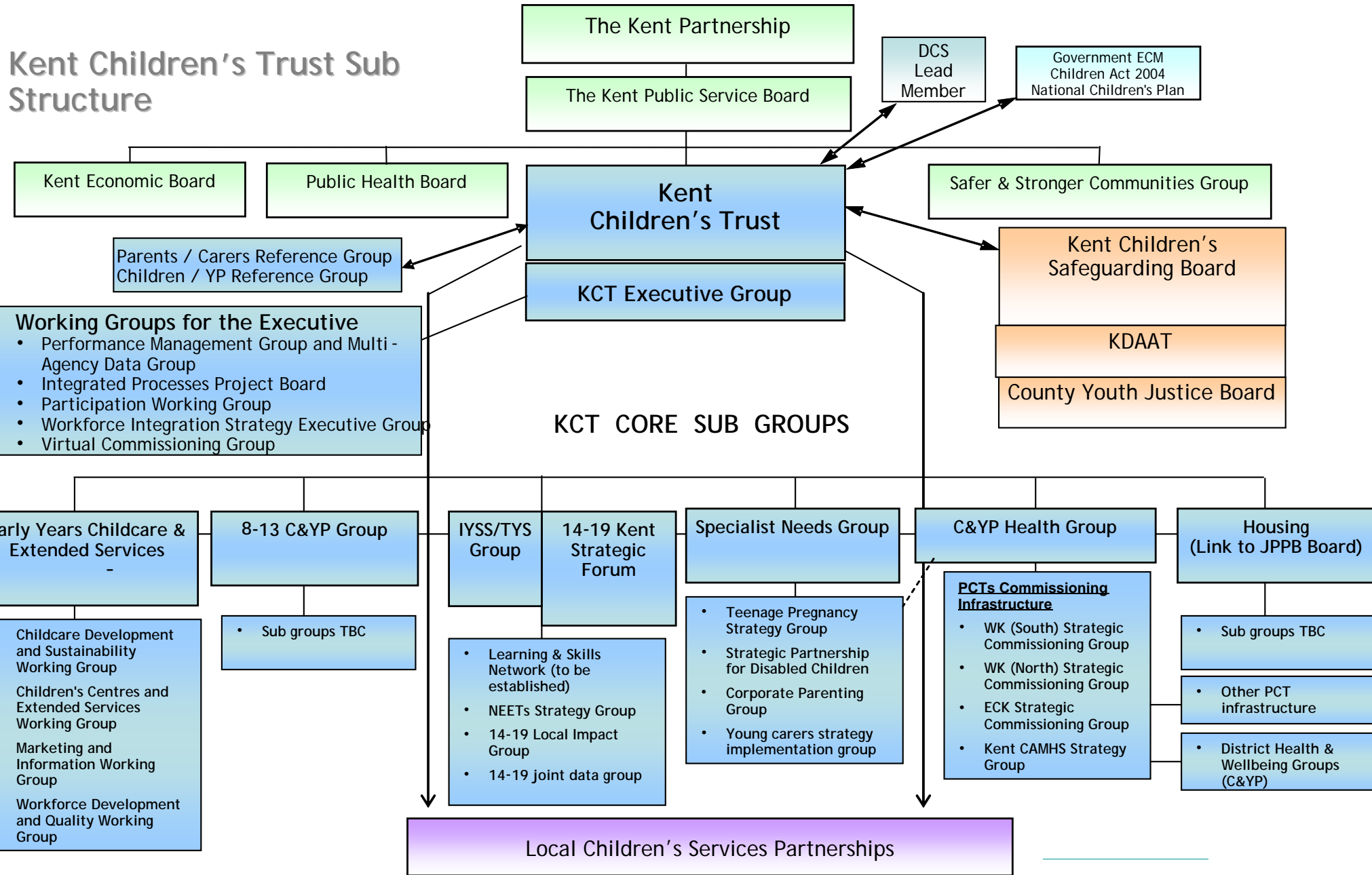
Integrated processes are being guided and rolled out with support from a multi-agency project board and the partnership aims to have fully rolled out the Common Assessment Framework (CAF) and lead professional arrangements across Kent by July 2009. The roll out of the Common Assessment Framework has led to a number of existing processes being rationalised in the localities and more children and young people accessing early intervention and support.

KCC has devolved a number of educational and other support services to the local partnership teams to ensure that they are responsive to local needs and support our strategy to intervene early and prevent the escalation of children and young people's needs. Over the coming year the partnership will be planning which other services would be best located as part of the emerging multi-agency teams in the localities. The local partnerships are developing innovative local programmes for prevention and early intervention and evaluating the impact of these on children and young people in their area.

The local partnership managers have established local boards that represent the interests of all key partners in the Trust locally; this work alongside extensive networking has ensured that the Kent Children's Trust as a whole has good local links with the district and county Local Strategic Partnerships, schools, early years and other education providers, district council officers working with children and young people, local safeguarding and community safety arrangements (including the police), health commissioners and a range of voluntary and community sector representatives and providers. There are parent forums in each Local Children's Services Partnerships that provide a parent voice for the partnerships and are increasingly involved in commenting on and reviewing aspects of their local Children and Young People's Plan.

KCC is aligning the provision of social work support (servicing the high level needs for vulnerable children in the area; including looked after children and those who are at risk) to the local partnerships. Managers from these social care services are represented on all local partnership board

# Kent Children's Trust Sub Structure



## **Appendix 2: County Wide and Local Activity that supports the achievement of our priorities**

We have described some key actions in the main CYPP review document but that is only a small sample of the range and scope of the work happening across the County. Here are some more examples of what the partnership is doing to make a difference:

### **Priority 1**

#### **Large Projects and County Wide Activity**

**Some things the partnership is doing to make a difference:**

- KCC's Supporting Independence Programme (SIP) has been working on a number of initiatives with other organisations to try and combat the issue of worklessness in many of our most disadvantaged communities.
- Children, Families and Education's Advisory Service Kent and Study Support are working with the Personal Finance Education Group on the HSBC initiative "What Money Means". This includes developing *managing your money* resource materials for Primary and Secondary Schools.
- A family programme has also been produced looking at financial capability. 3 schools have been part of the initial trial with another 50 ready to engage.
- Children's Centres and Family Liaison Officers are able to signpost to debt counselling and welfare services.
- Kent has increased funding to the Citizen's Advice Bureau by £250K in order to ensure increased access to debt advice and as a part of its development of the Kent Credit Union including fortnightly drop in sessions at a large number of schools.
- Work is beginning to develop an affordability policy for education settings to ensure that issues relating to material hardship do not affect young people's ability to participate in Education or wider children's services.
- An initial evaluation of the pilot phase of the Kent Higher Education Compact, a scheme aimed at young people from low income backgrounds and designed to increase awareness and encourage them to apply for further education courses suggests that this type of activity could be effective in encouraging increased participation in higher education amongst young people from low income backgrounds.

## **Focused activity and work going on in the Local Community**

### **Some things the partnership is doing to make a difference:**

- St. Giles Trust has been commissioned to work with families of offenders to include debt advice and support.
- Devolution of Education Welfare Officer support to Local Children's Services Partnerships has enabled effective targeting of assistance to those schools identified as 10% - 20% above free school meal median.
- We are piloting the Extended Services Disadvantage subsidy- called Your Choice in Kent -across 8 Local Children's Services Partnerships

## **Priority Two**

### **Large Projects and County Wide Activity**

#### **Emotional wellbeing:**

- Targeted Mental Health in Schools project: The project has engaged with schools and pupils to raise mental health awareness, and give young people a voice in shaping the project. Young people were involved in the interview process to select project officers. Year 5 children from West Minster Primary School were involved in renaming the project to give it a local brand identify.

#### **Reducing Teenage Conceptions:**

- Kent wide promotion of the contraction schemes: 4YP, the C-card scheme and Pharmacy Contraceptive Scheme, including rural access, and emergency services.
- Extra funding has been allocated in East Kent to increase the number of sexual health/teenage pregnancy outreach workers to a total of 18. West Kent has employed 6 Sexual Health Outreach Workers.
- Connexions provides preventative health clinics/ services in Connexions Access Points and Cyber babies are used to enable young people to experience simulated "caring".

#### **Healthy lifestyles:**

- 3 School Drug Education Advisors are supporting schools to work with substance misuse issues and developing education programs and resources for schools.

### **Reducing childhood obesity:**

- 'Don't Sit Get Fit' works with children aged 5-14 in schools, youth clubs and other community settings. A nutritionist and two physical activity leaders offer a general programme of healthy eating and activity to suit the school curriculum and involve other health and educational partners to identify groups who would benefit from the extra support of a specialist community based programme.
- The launch of the first Kent Community Alcohol Partnership (KCAP) project is aimed at changing attitudes to drinking among young people and supporting retailers to reduce sales of alcohol to underage drinkers. This is the largest scheme of its kind in the country and aims to improve information sharing between retailers and Kent enforcement agencies; raise the profile of the legal implications of underage drinkers who attempt to buy alcohol illegally; and educate, inform, advise and support young people and parents, using a variety of communication methods.

### **Focused activity and work going on in the Local Community**

#### **Emotional wellbeing:**

- The Acorn nurture project is a multi-agency project that has improved outcomes for those children starting school who have presented needs such as unacceptable behaviour and not being ready for school.
- The multi-agency SPARKS programme operating in Tunbridge Wells, Cranbrook and Paddock Wood aids transition from Primary to Secondary school for those children who have been identified as requiring additional support.
- Let's Get Out! is a holiday programme available in Dover, Deal and Thanet intended to provide an opportunity for children to gain an insight into how living a healthy and active lifestyle can enhance their lives. There is a focus on team building, raising confidence and self-esteem, and helping children cope with the challenges presented by changing schools.

### **Reducing childhood obesity:**

- 'GO FOR IT' is for children and families in the Maidstone area, where one fifth of children and young people are overweight. It is a course for parents and pupils to help raise awareness of the underlying issues of obesity and build confidence and personal strategies to change harmful activity and eating habits.

- West Kent PCT is investing in the national programme MEND (Mind, Exercise, Nutrition and Do It). A MEND programme is available at Aylesford Sports College, sponsored by Sainsbury's and in association with national MEND and the Youth Sport Trust.
- Good relationships have been forged between District leisure services and the Primary Care Trusts which have led to a commitment from the Eastern and Coastal Kent PCT to support targeted swimming programmes in that part of the county.
- Two Community Chefs are at work within deprived areas of East and West Kent. They are developing cooking skills courses that also provide healthy eating knowledge and build confidence in preparing foods using fresh, nutritious and affordable ingredients.

## **Priority Three**

### **Large Projects and County Wide Activity**

#### **Supporting parents:**

- We have worked with parents and carers to produce a new parenting strategy and charter.
- We continue to develop and invest in multi-agency preventative services to support families and children facing difficulties through:
  - transition programmes involving parents so that they are able to support their children and build their self-confidence and self-esteem at times of transition in their lives.
  - improved mental health awareness, use of Leuven techniques and Solihull Approach training for a broad range of practitioners has led to improved early recognition of mental health risk factors, better interagency working across Kent and appropriate support for families being accessed earlier.
  - development of the application of educational and child psychology interventions within broader community support to families including therapeutic play approaches and the "Families First" programme.
  - Twelve Children Centres in four areas of highest deprivation in Kent – Gravesend, Swale, Thanet and Dover are currently engaged with the Parents as Partners Core Project. Weekly workshops are offered to parents/carers aiming to promote children's growth and development and help parents to gain confidence in playing and supporting learning.
- Kent Adult Services and Children's Social Services have new protocols in place to make sure service users who are also parents have any needs relating to their parental role considered as part of their assessment and that they are linked to relevant services to support them and their children.



## **Focused activity and work going on in the Local Community**

### **Supporting parents:**

- Parenting programmes are in place across Kent operating through the multi-agency teams of the Children's Trust. Parenting practitioners working with the most vulnerable families have received additional intensive training.
- Kent Adult Education Service has worked with colleagues in Kent prisons to provide family fun activity events to foster family ties as well as encouraging lifelong learning.
- Kent's prisons have taken an active part in The National Year of Reading. Activities have included Story Book Dads/ Mums which has enabled prisoners to develop their reading skills to enable them to record a story to be sent home to their child.
- St. Giles Trust is working with the Probation Service to provide family support for families of offenders.

### **Domestic Abuse:**

- Dover & Thanet Health has commissioned Action for Children's Impact counselling service for women and children who are affected by Domestic Abuse.

## **Priority Four**

### **Large Projects and County Wide Activity**

- The Kent Joint Policy and Planning Board (JPPB) for Housing is a strategic partnership between health, housing and social care. It provides the forum where strategic issues requiring joint working can be raised and measures to address them, developed.
- The JPPB has launched a new web site that includes guidance about the Single Agency Assessment process, an easy way for Health or Social Services professionals to refer any service user with a housing related need to their local council for help accessing suitable accommodation.
- The JPPB are in the process of developing a move on accommodation strategy, with a toolkit, to enable providers to prepare those in supported housing, to move on to independent living. This toolkit will be tailored for

each client group including specific guidance and information for young people.

- A Local Reconnection Policy has been agreed to enable vulnerable people to be housed in an area where they have connections to friends and family.
- New accommodation-based services commissioned by Supporting People in West Kent and Dover will also be accessible to young offenders. The Supporting People team is working in close partnership with the Youth Offending Services to ensure that young offenders can access all services delivered specifically to vulnerable young people. The partners are currently exploring the possibility of a rent deposit/rent guarantee scheme for young offenders
- Training on the Young Persons' Homeless Protocol has now been completed in each local authority area in Kent

### **Focused activity and work going on in the Local Community**

- A pilot in Dover has been agreed with the District Council to adapt accommodation to help young people with a disability to experience living independently in the community.

## **Priority Five**

### **Large Projects and County Wide Activity**

#### **Young carers:**

- A training DVD that young carers helped to produce and that features only young carers will continue to be used to raise awareness, especially in schools and other settings accessed by young people.

#### **Looked After Children (LAC):**

- Computers continue to be provided for Kent LAC aged 11 plus as part of KCC's Pledge. Government funding has been obtained to extend this to care leavers and other vulnerable groups, some of whom will be on the 'edge of care'.
- KCC's Treatment Foster Care Scheme and the Therapeutic Re-Parenting Programme were both highlighted as excellent in Ofsted's 2008 Inspection, noted for offering real opportunities for children and young people who have struggled in mainstream foster care, both to settle with a family and to achieve educationally and socially.

## **Children with learning difficulty or disability:**

- Multiagency co-operation in Kent is excellent and is regarded by Together for Children (a national partnership) as way ahead of other authorities. Without this, we would not have progressed as far as we have with an ambitious short breaks transformation programme.
- Children with a wider range of needs and their families can now access overnight breaks. Kent overnight breaks units now provide for children with medical needs, as well as those with learning disabilities, as they are staffed by care and nursing staff working together. Overnight short breaks can be provided for young people with physical disabilities in our units and elsewhere, for example at Centre Parcs.
- In the 2008-09 LDP round invested in the following full-time equivalent posts for Early Support:-
  - Canterbury, Faversham, Thanet
    - Occupational Therapist : 1; Speech & language Therapist: 1; Physiotherapist: 1; Administrator: 1
  - Ashford, Shepway, Dover
    - Occupational Therapist : 1.2; Speech & language Therapist: 1.2; Physiotherapist: 1.2; Administrator:1
  - Swale
    - Occupational Therapist : 0.5; Speech & language Therapist: 0.5; Physiotherapist: 0.5; Administrator:0.4
- Attention Deficit Hyperactivity Disorder (ADHD) Workers were commissioned from East Kent Hospitals Trust (these have only recently taken up posts) and Kent & Medway NHS & Social Care Partnership Trust (these posts are to be advertised in 09/10). The CAMHS Clinical Network Group is developing service model recommendations that will go to the CAMHS Strategy Group to shape future services during 09/10. An ADHD nurse practitioner in Ashford working with a GP With Special Interest is reported to have been successful. Discussions have taken place with all GP Practice Based Commissioner Leads across Kent about how the ADHD workers in the community will be able to support shared care arrangements. In Maidstone, shared care between GP and paediatrician already happens informally, and we hope to extend this as ADHD workers take up posts. All the investments outlined above are ongoing and require multi-agency collaborative working to be effective.

In 08/09 we commissioned 26 new services. Other work included:

- Resource Directories for North West Kent, South West Kent, North East Kent, South East Kent and Maidstone so that families have better access to information on services in their areas. They will be published as booklets and

on the Kent Resource Directory [www.krd.org.uk](http://www.krd.org.uk) which will enable them to be updated regularly.

- Across the county the Portage Scheme has been developed to enable more families to access the service. The Extended Schools service has been able to provide training for their extended schools staff in the inclusion of disabled children to their service.
- Overnight break units at Rainbow Lodge (Dartford) and Court Drive (Maidstone) upgraded to Ofsted registration requirements. Fairlawn (Ashford) has been able to upgrade hoists and the air quality. Fairlawn has also spent money to bring its flat up to standard, for use for developing independence skills with teenagers.
- Windchimes, a new resource centre for disabled children from East Kent was opened. It was developed in partnership between Kent County Council, Eastern and Coastal Kent Primary Care Trust and The Children's Society. Special Needs Advisory & Activities Project (SNAAP) is also based there. The centre has been designed especially to meet the needs of children with a broad range of disabilities, providing recreational activities and social opportunities. A six-bedroomed house is based on the site where children with the most complex needs can stay for up to three nights to give their families a break
- A number of activities have been expanded at Sunrise (Tunbridge Wells) and Windchimes (Herne Bay) because the Pathfinder programme has funded a caretaker so that the centres can be open in the evenings and at weekends.
- The specialist fostering short breaks service has been increased, as has the funding for adaptations to foster carers' homes to widen the range of children who can have these short breaks. Similarly there has been an increase in Deaf Blind interveners.
- There have also been a number of grants made to groups and organisations such as The Children's Society, Barnardos, Parents Consortium, Woodshed, FLAG, Someone Special, SNAAP and Dandelion Trust who provide new opportunities for disabled children. These range from a couple of hours for a specific activity such as drama, or support for families, to provision of a Toy Library at Windchimes.

## **Focused activity and work going on in the Local Community**

### **Looked After Children (LAC):**

- The Kent County Fostering Services implemented and delivered the new Children's Workforce Development Council 'Standards for Foster Carers' and

delivered a new recruitment strategy for Foster Carers and Adopters. The service also identified children with attachment disorders through screening of all looked-after 4-11 year olds for emotional wellbeing to inform the CAMHS strategy for looked-after children (LAC) in readiness for a new national indicator for LAC.

- Four district councils have introduced a Leisure Pass scheme giving free or preferential rates for all LAC to their local district leisure facilities.
- Music bursary scheme for KCC LAC available via Kent Music School.
- Reach out and Read: a partnership between Looked After Children Advisers Team, the Fostering and Volunteering Team and Volunteer Reading Help used the ROAR scheme to monitor training for 48 carers and provided volunteers to work with 42 LACs outside school hours for one week.
- The Education Assessment Service has successfully placed more newly arrived unaccompanied asylum seeking children and young people – reducing the proportion who are not in employment, education or training from 24% in April 2007 to 19% in April 2008.

#### **Children with learning difficulty or disability:**

- Dmax, a disability sports club for children aged 8 – 19 years is now running twice weekly in Maidstone led by Maidstone District Council and supported by The Astor of Hever Community School, Maidstone Leisure Trust and Youth Opportunities Fund.
- Me 2 is a charity working across Kent to help young people with disabilities or learning difficulties to access mainstream youth clubs and services.
- Ashford Borough Council with Children, Families & Education and Adult Social Services has developed supported living housing in Ashford for young adults with disabilities.
- Additional investment to health services operating in East Kent means that young disabled children and their families (aged between 0-5) have been able to:
  - benefit from a reduction in the number of appointments that they have to attend through a joined up approach to assessments, interventions and reviews
  - play an active role in their assessments and reviews
  - receive support from a Key Worker to carry the burden of liaising with the team of professionals supporting them, providing emotional and practical support when it is needed.

## Priority Six

### Large Projects and County Wide Activity

#### Some things the partnership is doing to make a difference:

##### Participation in Activities:

- The recent KCC Select Committee report on the provision of activities for young people has produced a number of recommendations which should support greater participation in activities and recommends that we make sure we promote positive language, perceptions and expectations of young people.
- The Local Kent 20 in 12 Learning Programme was launched on the Paralympic Games handover day in Sept 2008, with schools across the County encouraged to sign up to the Olympic & Paralympic values. Arts colleges from around the county interpreted and performed the seven Olympic and Paralympic values. Each Local Children's Services Partnerships is being supported to deliver at least one major 2012 curricula project in academic year 08/09 and then build on this to 2012.
- The national Olympic Education programme "Get Set" has also been launched. Over 34% of Kent schools have signed up to this educational programme, which is considerably more proportionately than any other county. Kent received the first national award for being the most proactive in inspiring schools to sign up to this programme. Kent Youth Service has plans to run international camps in the years leading up to 2012 and Kent Youth County Council has an Olympics Sub Group
- March 2009 saw the inaugural Kent Youth Theatre Festival, involving over 200 young theatre practitioners, facilitators, youth theatre leaders and supporters. Young people took part in workshops such as stage make-up, musical theatre, and mask workshops. Plans are underway for a two-day festival in 2010.
- Phase 1 of a new website, ([www.togogo.info](http://www.togogo.info)) was launched in July 2008, helping young people to find out about activities in the county. Phase 2 will be launched by the end of 2009, taking into consideration feedback from young people.

##### Reduce Youth offending:

- Youth Offending Service is working with:
  - The police who are piloting restorative neighbourhoods in Maidstone and Shepway with the objective being to hold young people accountable for their (minor) offending behaviour while enabling their diversion from the

youth justice system. This approach is building on the work already being undertaken with schools, some of which are using restorative processes, as opposed to contacting Kent Police, as the means for resolving conflicts such as bullying. This strategy, once fully implemented should have a decisive impact on the numbers entering the youth justice system. YOS are working with the Community Safety Unit in the Communities Directorate to promote these approaches.

- The Youth Service to ensure children and young people known to the YISPs are included in opportunities provided via “Positive Activities for Young People” (PAYP), the Rhythmix music and dance programme and those being delivered by Charlton Athletic FC, the Army Cadet Force and the District Councils.
- KDAAT enabling the police and others such as schools to refer children and young people to drug and alcohol education programmes where they are known to be involved in substance misuse.
- The Local Children’s Service Partnerships which will enable access for YISPs to parenting services designed to support more effective parental supervision, to assist children and young people to be reintegrated into education provision and to funding of YISP activities within each of the districts.
- Adolescent Resource Centres, the Alternative Curriculum Programme and the Connexions Service with a view to ensuring those children and young people excluded from school (a factor strongly associated with involvement in offending behaviour) are maintained and supported in some form of education or training provision.
- The police, the Education Advisory Service, the Alternative Curriculum Programme, KDAAT and the Youth Service in the development of the “Guns and Knives programme which was launched in early January to promote an anti violence strategy amongst children and young people in the county.
- Kent Fire and Rescue with whom joint arrangements are being planned as the Service has a wider role which includes commitments to reduce youth crime and anti social behaviour.

## **Focused activity and work going on in the Local Community**

**Some things the partnership is doing to make a difference:**

#### Reduce Youth Offending:

- Specific work aimed at reducing incidence of young offending has been complimented in District inspections. (Kent Agreement 2.)
- In summer 2008 KCC Community Wardens facilitated a county-wide 7-a-side football tournament involving over 1,000 'hard to engage' young people (boys and girls), including those from Medway Unitary Authority. The final involved 220 young people and was held at Charlton Athletic's training ground.

#### Participation in Activities:

- The Kent Arts Development Unit now shares a post of Youth Arts Officer with the Youth Service, developing effective relationships with Youth Theatre groups and Arts organisations. A partnership is being forged with the Youth Service which is enabling Youth Theatre activities to be developed within Youth Centres. Through consultation with Youth Theatre practitioners and organisations the need for a Youth Theatre Network, and the benefits of an annual Youth Theatre Festival, have been established.
- At the end of January 2009, 66 out of 103 secondary schools were providing extended services including out of school activities.

## **Priority Seven**

### **Large Projects and County Wide Activity**

#### **What the data tells us is going well:**

- Improvements in 12 of the 13 aspects of learning in the Early Years Foundation Stage learning outcomes.
- The development and phased implementation of the Setting Improvement Partner (SIP) Programme aims to accelerate improvement through a structured visit programme. Two of the programmed visits to these settings focused on assessing the quality of communication, language and literacy and personal and social education and then identifying key actions for the provision including additional training. In phase one this programme supported 123 settings
- The 2008 National Year of Reading campaign in Kent led by Communities and Children, Families and Education has been a powerful catalyst for new partnerships and unlocking literacy including developing a Text Reading Group for teenagers in partnership with Swale Borough Council.



- Thanet Works is the overarching title of a new initiative that brings together funding from the Government's Working Neighbourhoods Fund (£4.057m) with Community Cohesion monies (£0.27m). The Working Neighbourhoods Fund is aimed at tackling concentrated pockets of worklessness and getting people, particularly young people, into training, education and/or work.

## **Priority Eight**

### **Large Projects and County Wide Activity**

- Strong leadership and contribution to the work of Kent's Safeguarding Children Board was noted as a major strength in the APA report.
- 100% of Kent maintained schools judged good or better for safeguarding by Ofsted.
- Kent Fire and Rescue Service has seen an increase in the number of agencies referring families for home fire safety visits (25%) and an increase in the number of children being referred to the fire setter scheme (15%).
- Kent Safe Schools has developed, in partnership with the Kent Anti-Bullying Strategy Group, a ground breaking Anti-Bullying Accreditation scheme which is being rolled out across Kent Schools. As part of the pilot, two Local Children's Services Partnerships have achieved full Safe Cluster/Partnership accreditation. This indicates that all the schools within the Partnership have engaged in rigorous processes to ensure that they are maximizing opportunities to tackle bullying.
- A county-wide service agreement is now in place with Victim Support in Kent where Children's Social services staff can signpost children & families who have been affected by, or witnesses to, crime.
- Children, Families and Education (CFE) are leading on the development of a Kent Safeguarding Children's Board Anti-bullying Policy. This will put in place a framework for Kent Safeguarding Children's Board partners to prevent and respond to bullying. As part of the pilot, two Local Children's Services Partnerships have achieved full Safe Cluster/Partnership accreditation. This indicates that all the schools within the Partnership have engaged in rigorous processes to ensure that they are maximising opportunities to tackle bullying

### **Focused activity and work going on in the Local Community**

- Peer mediation schemes have been introduced in 2 of the pilot schools in partnership with Kent Mediation Service.

- Specific work to raise the profile of homophobic bullying has been initiated this year to raise school awareness of this issue and how to deal with it.
- The Charlton Athletic Community Trust is a multi-agency initiative which operates to reduce crime and disorder and promote community cohesion and citizenship. (Kent Agreement 2).
- There are also a large number of local initiatives within the boroughs that supports this action, for example. Recent analytical research on the Drug Intervention Support Programme has shown that the vast majority of young people do not re offend or come to the attention of partnerships through drug issues following completion of the programme. This supports reducing first time entrants into the criminal justice system target.
- Charlton Athletic Social Inclusion Programme has undertaken academic evaluation on the impact of anti-social behaviour within the community. What is noticeable about the inclusion scheme is the numbers of inputs coaches give to young people on key anti-social behaviour topics such as alcohol and smoking.

## **Appendix 3: Financial Resources**

### ***What is going well?***

- Excellent outcome from the Annual Performance Assessment (APA) for 2008 which praised Kent County Council children's services in several areas including strong and consistent record of improvement and partnership working and the focus on value for money.
- Excellent outcomes following the CPA - 'The Council has for ten years been seeking excellence and its organisation is impressive, high quality, responsive and gives good value-for-money'. 'It achieves good value-for-money and is particularly effective at increasing its financial capacity by attracting funding and using its assets astutely'.
- 63.5% increase in budget devolved to Local Children's Services Partnerships for 2009-2010.
- Children and Young People's Plan integrated into the Local Authority's Medium Term Plan process resulting in policy led funding.

### ***Some things the partnership is doing to make a difference:***

- Additional accountancy support has been approved to support The Local Children's Services Partnerships in the effective and efficient use of resources to deliver KCT priorities.
- Kent's Building Schools for the Future Programme, the largest school building scheme in Europe, is worth an estimated £1.8billion.
- Kent has been allocated £800k to develop a menu of support for families affected by poverty delivered through Local Children's Services Partnerships.
- Kent has been chosen to pilot the national Aiming High for Disabled Children programme. The programme will lead to a significant investment in services and support for disabled children and their families. Kent has been awarded £15million over the three year period 2008/11.
- Work began on New Line Learning, the first scheme in the Batched Academies Programme which is valued at £120million and will see state-of-the-art buildings and ICT facilities delivered across 5 academies with the other schemes following on throughout 2009/10.
- In May 2008 three additional state-of-the-art secondary schools were unveiled. Funded by £100million from the Government's Private Finance Initiative (PFI), which has delivered six new secondary schools in the county.
- Marlowe Innovation Centre, the new £1.9million cutting edge centre for business in East Kent, was opened in September 2008 It aims to facilitate the growth and development of small or start-up businesses and offers companies the chance to partner with the academy, providing opportunities for students to gain 'real world' experience of developing new

- businesses and giving businesses the opportunity to access the resources of the school community.
- The Youth Opportunity and Youth Capital Funds since 2006 have made a significant impact on young people's ability to engage in positive activity. In 2008/9 to date 171 projects have received funding totaling £499,500 from YOF. 22 projects have received £635,100 from YCF.
  - Kent Youth Services commissions youth work through the Third Sector – totaling £420,000 in 2008/9 – and supports a much wider range of voluntary youth work provision across the county with free basic training and access to other KYS services.

## **Governance**

The Kent Children's Trust Board has a clear set of governance arrangements with accountabilities and decision making set out within the agreed terms of reference.

On 22nd May 2008 all the partners of the KCT signed a partner agency agreement. This set out a number of commitments that will underpin the delivery of services through the Trust partnership and included:

Each lead officer from the partner organisations will ensure their agency makes an appropriate contribution to the resourcing of the Children and Young People's Plan.

All partners are responsible for ensuring that the priorities are implemented and the alignment of resources and the delivery of the priorities articulated in the Children and Young People's Plan are directed through their individual organisations business and strategic plans.

Delivering our priorities for children and young people in Kent is a joint endeavour and depends on the investment of time and resources from all key partners. The Kent Children and Young People's Plan plays a critical role in identifying areas for action and securing the support of key partners to advance these. The integration of the plan into the development of our Local Area Agreement (Kent Agreement 2), Local Service Partnerships, Local Children's Services Partnerships and planning structures ensures that resources are targeted at need. This year the KCT agreed to undertake a detailed assessment of the resources and investment underpinning the Kent CYPP to facilitate areas for joint commissioning.

In 2008 Kent implemented arrangements to support the local planning, commissioning and delivery of key services for children and families to provide a more responsive, coherent and personalised service delivery, earlier and closer to the point of need.

During the period 2008-9 and 2009-2010 there has been a dramatic movement in resources, both financial and human to the 23 Local Children's Services Partnerships. This is in line with increased levels of responsibility and the ongoing development of the 23 Local Children's Services Partnerships to act as the main delivery arm of the Kent Children's Trust Board.

### **Budget 2009/10**

A substantial amount of money is spent on children and families in Kent. Kent County Council spent a net £193million on Children's Services in 2008/09 and plans to spend £210million for 2009-2010. However, after taking account of specific grants and other income the total gross expenditure was £1,323million in 2008/9 and £1,356 million in 2009/10 including funding delegated to schools. The 2009-2010 budget includes a range of new initiatives to address key priorities within the CYPP (see Kent County Council's Medium Term Plan).

According to the latest DCSF benchmarking the Local Authority's direct funding of £4004 per pupil is significantly above the average of £3865 for similar County Councils.

The actual cost of services for individual children differs markedly according to need. A long term aim is to develop more effective preventative services so that fewer children need the most intensive and expensive interventions which should gradually allow resources to be redirected.

### **LCSP gross expenditure budgets supporting the Kent CYPP:-**

Budget allocated to Local Children's Services Partnerships by KCC Children, Families and Education Directorate has been transferred from existing budgets to support effective service delivery at the most local level.

Year	£m	FTEs
2006-7	£10.639	244
2007-8	£12.936	273.5
2008-9	£17.054	294.9
2009-2010	£50.706 *	776.9

\* An additional £3.4 million will be delegated during 2009/10

### **Other Budgets**

- Family and Children's Services £402.187m
- Schools £903.614m
- Health £200 million
- With a £1million budget, Kent Adult Education Service remains the largest provider of funded family programmes in Kent
- Youth Service - £12.366million
- Youth Offending Service - £6.465million
- Young People's Services in KDAAT - £1.472million (TBC)

This is certainly an under-estimate as it does not include police expenditure, District Councils or that of the voluntary and community sectors. Most universal services cannot easily disaggregate expenditure by age group. For example supporting and improving outcomes for children and young people through expenditure on leisure and sports, play strategy provision, Crime and Disorder Reduction Partnerships, Housing Services and other specific projects.

### **Additional Funding – Medium Term Plan (MTP)**

Many of the actions in the plan can be achieved within existing resources, however others require additional funding. By ensuring that the Kent Children and Young People's Plan is integral to the local authority's medium term financial planning framework we can make certain that resources are aligned to strategic priorities, and value for money and efficiency are central to service planning.

As a key element of our medium term financial planning, we are using the Children and Young People's Plan and this review to prioritise future expenditure and ensure that we are investing in services that will deliver the greatest impact and meet the needs of our children and young people.

For 2009-2010 the Local Authority has identified additional resources of £17m to implement specific improvements to children's services, a few examples are as follows:

- An additional £1.5 million to enhance our capacity to deal with all child protection matters – funding for front line social workers.
- Increased Early Years support for foundation stage improvements: £500k
- Increased Early Years entitlement: £2.1m
- JAR Meeting our LAC pledge: £1.3 m
- CAF Improved information sharing and the common assessment framework: £1m
- JAR -Alternative curriculum: £300k ( 2009-10 £1.1m over 3 years )
- Health needs: £200k
- Therapeutic fostering: £300k
- Residential care: £1.5m
- Special Educational Needs transport: £1.2.m
- JAR Partnership With parents: £300k (over 2 years)
- Safe places to play: capital £500k (£1.2 m over 2 years)
- YOS - Additional commissioned victim liaison services following inspection recommendations: £90k
- Youth - ToGoGo website: £12k
- Supporting Independence Programme - Kent Apprenticeship: £100k
- Supporting Independence Programme - Kent Community Programme: £100k

## **Capital**

Kent continues to be pro-active in managing its property assets to secure improvement and modernisation of the children's and young people's service estate. Kent's Building Schools for the Future Programme is the largest school building scheme in Europe and is worth an estimated £1.8billion, this funding allocation is used in tandem with other funding streams such as the Children's Centres programme, to maximise the use of resources.

## **Risk**

Kent's overall financial position is strong with an excellent record of financial stability as demonstrated through the CPA and JAR ratings. However with significant savings required in order to maintain financial balance and some risks associated with changes to grant funding the Trust will ensure that this is monitored on a regular basis.

The **downturn in the economy** will also impact on the ability of the Trust to deliver its priorities as unemployment and lack of funds affect children and families, this in turn will impact on each organisation's budget as demand for support increases during a period where the public sector is expecting dramatic efficiency savings. The Trust will need to be fully informed of resources available to meet its priorities to inform decision making and to support efficient investments across the partnership to best support integrated working to continue to improve outcomes.

## **The Way Forward/ Prioritising Future Expenditure**

To deliver the CYPP priorities we recognise the need to redefine the way in which services are delivered. As a partnership we are committed to further devolving resources to local communities to better meet needs of children, young people and their families. Over the lifetime of this plan, we expect to reconfigure revenue budgets as part of the step change process towards more effective partnership working.

In order to move partners towards the goal of aligning and pooling resources to deliver our agreed outcomes; the KCT Performance management group has been tasked to 'secure an audit of resources currently being spent against the priorities in the CYPP by December 2009'. This will allow partners to consider options for pooling or aligning budgets to improve performance in specific areas of activity. It will also provide more detailed feedback on partners' readiness to provide a more detailed breakdown of resources for the 2011 update of the CYPP.

As a baseline we will be working with partners to analyse our 2009-10 Children's Services budgets to understand in detail the level of resources held and how resources are distributed across the spectrum of support from universal through targeted to specialist services. This analysis will provide an important basis for

our early intervention and prevention services and inform discussions about the balance of investment between prevention and targeted care. Over time, this analysis will help us to identify additional opportunities to invest earlier in order to make later savings and thereby deliver better value for money and contribute to the efficiency agenda.



## **Appendix 4: Performance Management Arrangements**

### **Performance Management**

We are developing new ways of working together, not only on the front line but also strategically to streamline business processes across the partnership.

The Performance Management Group supported by the multi- agency data group has been established as part of the sub-structure of the Trust.

The Children and Young People's Plan itself, this review and the Needs Assessment and the performance management framework for the KCT are examples of strategic business that has been completed through the Trust's Performance Management Group and the multi- agency data group.

The Performance Management Group maintains effective, objective and robust performance management arrangements for the Trust, as one of the multi-agency working groups of the Trust Board and Executive. It will provide objective interpretation, reports and advice to the County Board and its sub-groups about performance on the priorities in the Children and Young People's Plan, and towards improving the Every Child Matters (ECM) outcomes.

The multi-agency data group serves as the data and analytical specialists of the Kent Children's Trust Board, providing it with high quality indicators and information about the population outcomes of all children and young people in Kent. It will support the Local Children's Services Partnerships by providing data by geographical area and will interpret indicators and trends, as one multi-agency body.

### **Understanding Our Communities**

The core role of the 23 Local Children's Services Partnerships is to drive forward the priorities from the Children and Young People's Plan as they relate to the specific needs of local communities. Kent is a large, diverse county with a mix of urban and rural areas. Only 18.5% of Kent's households fit the "traditional family" structure of a married couple with dependent children.

To understand their communities the LCSP Boards have to establish a shared understanding of the needs of local children and young people and their families. This is supported by robust multi-agency needs assessment, making best use of national, county and local data, feedback and information. Each LCSP has developed a partnership plan, the Local Children and Young People's Plan, which identifies key local priorities within the guiding framework of the Kent CYPP priorities where partners working together can have the greatest impact on outcomes for children and young people in the locality.

The KCT Multi-Agency Data Group was formally established by the KCT Board in 2008 to support the data required for Kent wide planning but also to provide LCSPs with detailed local data breakdowns to enable them to understand the

specific needs of their local communities. Consisting of different partner group representatives, the role of the data group is to serve as the data and analytical specialists of the Kent Children's Trust, providing it with high quality indicators and information about the population outcomes of children and young people in Kent. It does this by agreeing a set of indicators as part of the Trust's performance management framework, then providing robust data at County and local levels through a Planning Toolkit. The group interprets the indicators, including by disaggregated groups as much as possible, to inform the annual county Needs Assessment and to support LCSP's in their planning and performance monitoring.

A summary of performance for each Local Children's Services Partnership can be found at appendix.

This information will help to effectively target resources at those areas showing poorer outcomes or weaker performance.

## **Performance Data**

The following information provides a summary of performance for the Children and Young People's Plan national indicators. It can be seen that there is a correlation between those areas identified as areas for multi-agency improvement/development and those indicators that have been flagged as being in the lower quartile for performance.

For more information about Kent's performance a new toolkit has been developed through the multi-agency data group which provides an indicator-by-indicator summary of both past and current performance across all of the indicators contained within the KCT Performance Management Framework.

The link to the planning toolkit is:

[http://www.kenttrustweb.org.uk/Children/kct\\_multiagency\\_data.cfm](http://www.kenttrustweb.org.uk/Children/kct_multiagency_data.cfm)

**Summary performance sheets: The following section provides a summary of Kent's performance comparing Kent's performance to National performance followed by a summary sheet for each of the 23 Local Children's Services Partnerships showing performance against the Children and Young People's Plan Indicators**

# Performance Summary for Ashford 1

The chart below provides a summary of the relative strengths and weaknesses in respect of performance for this Local Children's Service Partnership (LCSP). The local result for each indicator is shown as a circle, diamond or square according to performance, against the range of results for the county which is shown as a bar.

### LCSP Performance:

- Lower quartile
- ◆ 'Average'
- Upper quartile

The data shown relates to 2007/08 unless otherwise indicated.

LCSP performance is graded as 'average' if it lies between the 25th and 75th percentile (i.e. is not either lower or upper quartile).



CYPP Priority	Indicator		Local Value	Kent Value	LCSP Worst		LCSP Best
Poverty	NI 102 - FSM achievement gap (Key Stage 2)	School-based	31	30	39		15
		Home-based	34		42		18
	NI 102 - FSM achievement gap (Key Stage 4)	School-based	33.1	31.9	50.1		4.3
Resilience & Health	NI 55 - Obesity in reception year - School-based		12.0	9.0	12.0		5.6
	NI 112 - Under 18 conception rate <sup>1 3</sup>		-11.2%	-11.6%	14.2%		-23.7%
	CT_1 - Sad or depressed most days	School-based	9	10	18		4
		Home-based	11		17		6
	CT_2 - Young people getting drunk at least once a week	School-based	6	9	13		5
		Home-based	7		13		5
Parenting	NI 32 - Repeat incidents of domestic abuse <sup>2</sup>		22.0	23.1	25.0		20.5
	KCC_2010 - Parents supported through Children's Centres		1250	16,198	0		3,113
	CT_4 - MMR immunisations by 2nd birthday <sup>1</sup>		87	86	80		91
Vulnerable Children	NI 104 - SEN/non-SEN gap (Key Stage 2)	School-based	49		64		45
		Home-based	48		64		44
	NI 105 - SEN/non-SEN gap (Key Stage 4)	School-based	52.4	47.3	60.3		17.2
	PAF - Health checks and dental checks for LAC <sup>1</sup>		41	60	41		89
Things to Do	NI 111 - First time entrants to the Youth Justice System <sup>1</sup>		16.6	16.6	23.1		6.6
	CT_6 - Have their say at school/college	School-based	69	68	59		84
		Home-based	68		62		80
	CT_6 - Have their say in their local area	School-based	33	36	27		42
		Home-based	34		28		46
	CT_5 - Barriers to activities - Cost		30	32	44		21
	CT_5 - Barriers to activities - Activity is not available locally		22	24	35		13
CT_5 - Barriers to activities - Lack of transport		21	21	28		17	
Engagement & Achievement	NI 117 - 16-18 year olds NEET <sup>1</sup>		4.5	5.2	9.7		2.2
	NI 78 - 5+ A*- C GCSEs inc. English and Maths (Floor)	School-based	3/5	29	100		0
		School-based	47	46	33		69
	NI 72 - 78+ points across the EYFS	Home-based	48		34		67
	NI 73 - Level 4+ in both English and Maths at Key Stage 2	School-based	66	69	54		81
		Home-based	69		56		80
	NI 75 - 5+ A*- C GCSEs incl. English and Maths	School-based	47.2	49.5	17.6		75.9
		Home-based	41.7		39.1		66.7
	NI 79 - Level 2 qualification by age 19 <sup>1 4</sup>	School-based	74.2	71.2	63.8		80.8
	NI 80 - Level 3 qualification by age 19 <sup>1 4</sup>	School-based	45.1	47.2	35.5		65.6
	NI 87 - Secondary school persistent absence rate	School-based	8.0	6.0	13.6		2.5
Safety	NI 92 - Narrowing EYFS gap	School-based	28.6	32.0	39.7		25.0
		Home-based	26.8		37.8		26.8
	NI 174 - Skills gap in the current workforce <sup>1</sup>		20.2	14.6	21.3		9.4
	NI 48 - Road traffic accidents <sup>1 4</sup>		-12.5	9.5	-42.9		45.0
	NI 70 - Hospital admissions (injuries)		87.0	125.2	182.2		87.0
	CT_7 - Feel safe most days in the area where they live	School-based	67	68	62		79
		Home-based	66		62		84
CT_7 - Feel safe most days getting to and from school	School-based	64	67	63		76	
	Home-based	66		63		78	
CT_8 - Rate of CYP who are victims of crime <sup>2</sup>		23.6	23.1	37.8		10.3	

<sup>1</sup> Data only available at District level. <sup>2</sup> Data only available at CDRP level. <sup>3</sup> Data shown is for 2005-7. <sup>4</sup> Data shown is for 2006/07.

## Performance Summary for Ashford Rural

The chart below provides a summary of the relative strengths and weaknesses in respect of performance for this Local Children's Service Partnership (LCSP). The local result for each indicator is shown as a circle, diamond or square according to performance, against the range of results for the county which is shown as a bar.

### LCSP Performance:

- Lower quartile
- ◆ 'Average'
- Upper quartile

The data shown relates to 2007/08 unless otherwise indicated.

LCSP performance is graded as 'average' if it lies between the 25th and 75th percentile (i.e. is not either lower or upper quartile).

LCSP Worst  LCSP Best  
 25th Percentile 75th Percentile

CYPP Priority	Indicator		Local Value	Kent Value	LCSP Worst		LCSP Best
Poverty	NI 102 - FSM achievement gap (Key Stage 2)	School-based	15	30	39		15
		Home-based	24		42		18
	NI 102 - FSM achievement gap (Key Stage 4)	School-based	25.8	31.9	50.1		4.3
Resilience & Health	NI 55 - Obesity in reception year - School-based		10.2	9.0	12.0		5.6
	NI 112 - Under 18 conception rate <sup>1 3</sup>		-11.2%	-11.6%	14.2%		-23.7%
	CT_1 - Sad or depressed most days	School-based		10	18		4
		Home-based	9		17		6
	CT_2 - Young people getting drunk at least once a week	School-based		9	13		5
	Home-based	7		13		5	
Parenting	NI 32 - Repeat incidents of domestic abuse <sup>2</sup>		22.0	23.1	25.0		20.5
	KCC_2010 - Parents supported through Children's Centres		0	16,198	0		3,113
	CT_4 - MMR immunisations by 2nd birthday <sup>1</sup>		87	86	80		91
Vulnerable Children	NI 104 - SEN/non-SEN gap (Key Stage 2)	School-based	55		64		45
		Home-based	55		64		44
	NI 105 - SEN/non-SEN gap (Key Stage 4)	School-based	34.1	47.3	60.3		17.2
	PAF - Health checks and dental checks for LAC <sup>1</sup>		41	60	41		89
Things to Do	NI 111 - First time entrants to the Youth Justice System <sup>1</sup>		16.6	16.6	23.1		6.6
	CT_6 - Have their say at school/college	School-based		68	59		84
		Home-based	67		62		80
	CT_6 - Have their say in their local area	School-based		36	27		42
		Home-based	31		28		46
	CT_5 - Barriers to activities - Cost		35	32	44		21
	CT_5 - Barriers to activities - Activity is not available locally		26	24	35		13
CT_5 - Barriers to activities - Lack of transport		26	21	28		17	
Engagement & Achievement	NI 117 - 16-18 year olds NEET <sup>1</sup>		4.5	5.2	9.7		2.2
	NI 78 - 5+ A*- C GCSEs incl. English and Maths (Floor)	School-based	0	29	100		0
	NI 72 - 78+ points across the EYFS	School-based	46	46	33		69
		Home-based	44		34		67
	NI 73 - Level 4+ in both English and Maths at Key Stage 2	School-based	76	69	54		81
		Home-based	71		56		80
	NI 75 - 5+ A*- C GCSEs incl. English and Maths	School-based	36.8	49.5	17.6		75.9
		Home-based	55.1		39.1		66.7
	NI 79 - Level 2 qualification by age 19 <sup>1 4</sup>	School-based	74.2	71.2	63.8		80.8
	NI 80 - Level 3 qualification by age 19 <sup>1 4</sup>	School-based	45.1	47.2	35.5		65.6
	NI 87 - Secondary school persistent absence rate	School-based	4.7	6.0	13.6		2.5
Safety	NI 92 - Narrowing EYFS gap	School-based	25.0	32.0	39.7		25.0
		Home-based	27.7		37.8		26.8
	NI 174 - Skills gap in the current workforce <sup>1</sup>		20.2	14.6	21.3		9.4
	NI 48 - Road traffic accidents <sup>1 4</sup>		-12.5	9.5	-42.9		45.0
	NI 70 - Hospital admissions (injuries)		118.3	125.2	182.2		87.0
	CT_7 - Feel safe most days in the area where they live	School-based		68	62		79
		Home-based	77		62		84
CT_7 - Feel safe most days getting to and from school	School-based		67	63		76	
	Home-based	71		63		78	
CT_8 - Rate of CYP who are victims of crime <sup>2</sup>		23.6	23.1	37.8		10.3	

<sup>1</sup> Data only available at District level. <sup>2</sup> Data only available at CDRP level. <sup>3</sup> Data shown is for 2005-7. <sup>4</sup> Data shown is for 2006/07.

## Performance Summary for Canterbury City & Country

The chart below provides a summary of the relative strengths and weaknesses in respect of performance for this Local Children's Service Partnership (LCSP). The local result for each indicator is shown as a circle, diamond or square according to performance, against the range of results for the county which is shown as a bar.

### LCSP Performance:

- Lower quartile
- ◆ 'Average'
- Upper quartile

The data shown relates to 2007/08 unless otherwise indicated.

LCSP performance is graded as 'average' if it lies between the 25th and 75th percentile (i.e. is not either lower or upper quartile).

LCSP Worst  LCSP Best  
 25th Percentile 75th Percentile

CYPP Priority	Indicator		Local Value	Kent Value	LCSP Worst		LCSP Best
Poverty	NI 102 - FSM achievement gap (Key Stage 2)	School-based	33	30	39		15
	NI 102 - FSM achievement gap (Key Stage 4)	Home-based	33		42		18
Resilience & Health	NI 55 - Obesity in reception year - School-based	School-based	19.3	31.9	50.1		4.3
	NI 112 - Under 18 conception rate <sup>1 3</sup>		-23.7%	-11.6%	14.2%		-23.7%
	CT_1 - Sad or depressed most days	School-based	7	10	18		4
		Home-based	7		17		6
	CT_2 - Young people getting drunk at least once a week	School-based	7	9	13		5
		Home-based	5		13		5
Parenting	NI 32 - Repeat incidents of domestic abuse <sup>2</sup>		22.7	23.1	25.0		20.5
	KCC_2010 - Parents supported through Children's Centres		556	16,198	0		3,113
	CT_4 - MMR immunisations by 2nd birthday <sup>1</sup>		88	86	80		91
Vulnerable Children	NI 104 - SEN/non-SEN gap (Key Stage 2)	School-based	54		64		45
		Home-based	55		64		44
	NI 105 - SEN/non-SEN gap (Key Stage 4)	School-based	54.0	47.3	60.3		17.2
	PAF - Health checks and dental checks for LAC <sup>1</sup>		81	60	41		89
Things to Do	NI 111 - First time entrants to the Youth Justice System <sup>1</sup>		9.5	16.6	23.1		6.6
	CT_6 - Have their say at school/college	School-based	81	68	59		84
		Home-based	80		62		80
	CT_6 - Have their say in their local area	School-based	42	36	27		42
		Home-based	46		28		46
	CT_5 - Barriers to activities - Cost		35	32	44		21
	CT_5 - Barriers to activities - Activity is not available locally		31	24	35		13
	CT_5 - Barriers to activities - Lack of transport		20	21	28		17
Engagement & Achievement	NI 117 - 16-18 year olds NEET <sup>1</sup>		4.7	5.2	9.7		2.2
	NI 78 - 5+ A*- C GCSEs incl. English and Maths (Floor)	School-based	1/7	29	100		0
		School-based	44	46	33		69
		Home-based	44		34		67
	NI 72 - 78+ points across the EYFS	School-based	64	69	54		81
		Home-based	63		56		80
	NI 73 - Level 4+ in both English and Maths at Key Stage 2	School-based	55.4	49.5	17.6		75.9
		Home-based	52.2		39.1		66.7
	NI 79 - Level 2 qualification by age 19 <sup>1 4</sup>	School-based	70.6	71.2	63.8		80.8
	NI 80 - Level 3 qualification by age 19 <sup>1 4</sup>	School-based	48.3	47.2	35.5		65.6
	NI 87 - Secondary school persistent absence rate	School-based	8.1	6.0	13.6		2.5
Safety	NI 92 - Narrowing EYFS gap	School-based	33.5	32.0	39.7		25.0
		Home-based	31.3		37.8		26.8
	NI 174 - Skills gap in the current workforce <sup>1</sup>		21.3	14.6	21.3		9.4
	NI 48 - Road traffic accidents <sup>1 4</sup>		5.9	9.5	-42.9		45.0
	NI 70 - Hospital admissions (injuries)		114.0	125.2	182.2		87.0
	CT_7 - Feel safe most days in the area where they live	School-based	76	68	62		79
	Home-based	75		62		84	
	CT_7 - Feel safe most days getting to and from school	School-based	73	67	63		76
	Home-based	70		63		78	
	CT_8 - Rate of CYP who are victims of crime <sup>2</sup>		24.0	23.1	37.8		10.3

<sup>1</sup> Data only available at District level. <sup>2</sup> Data only available at CDRP level. <sup>3</sup> Data shown is for 2005-7. <sup>4</sup> Data shown is for 2006/07.

## Performance Summary for Canterbury Coastal

The chart below provides a summary of the relative strengths and weaknesses in respect of performance for this Local Children's Service Partnership (LCSP). The local result for each indicator is shown as a circle, diamond or square according to performance, against the range of results for the county which is shown as a bar.

### LCSP Performance:

- Lower quartile
- ◆ 'Average'
- Upper quartile

The data shown relates to 2007/08 unless otherwise indicated.

LCSP performance is graded as 'average' if it lies between the 25th and 75th percentile (i.e. is not either lower or upper quartile).



CYPP Priority	Indicator	Local Value	Kent Value	LCSP Worst	LCSP Best
Poverty	NI 102 - FSM achievement gap (Key Stage 2) <i>School-based</i>	31	30	39	15
	NI 102 - FSM achievement gap (Key Stage 2) <i>Home-based</i>	31	30	42	18
	NI 102 - FSM achievement gap (Key Stage 4) <i>School-based</i>	15.9	31.9	50.1	4.3
Resilience & Health	NI 55 - Obesity in reception year - School-based	5.6	9.0	12.0	5.6
	NI 112 - Under 18 conception rate <sup>1 3</sup>	-23.7%	-11.6%	14.2%	-23.7%
	CT_1 - Sad or depressed most days <i>School-based</i>		10	18	4
	CT_1 - Sad or depressed most days <i>Home-based</i>	8		17	6
	CT_2 - Young people getting drunk at least once a week <i>School-based</i>		9	13	5
	CT_2 - Young people getting drunk at least once a week <i>Home-based</i>	7		13	5
Parenting	NI 32 - Repeat incidents of domestic abuse <sup>2</sup>	22.7	23.1	25.0	20.5
	KCC_2010 - Parents supported through Children's Centres	0	16,198	0	3,113
	CT_4 - MMR immunisations by 2nd birthday <sup>1</sup>	88	86	80	91
Vulnerable Children	NI 104 - SEN/non-SEN gap (Key Stage 2) <i>School-based</i>	55		64	45
	NI 104 - SEN/non-SEN gap (Key Stage 2) <i>Home-based</i>	55		64	44
	NI 105 - SEN/non-SEN gap (Key Stage 4) <i>School-based</i>	34.4	47.3	60.3	17.2
	PAF - Health checks and dental checks for LAC <sup>1</sup>	81	60	41	89
Things to Do	NI 111 - First time entrants to the Youth Justice System <sup>1</sup>	9.5	16.6	23.1	6.6
	CT_6 - Have their say at school/college <i>School-based</i>		68	59	84
	CT_6 - Have their say at school/college <i>Home-based</i>	75		62	80
	CT_6 - Have their say in their local area <i>School-based</i>		36	27	42
	CT_6 - Have their say in their local area <i>Home-based</i>	33		28	46
	CT_5 - Barriers to activities - Cost	37	32	44	21
	CT_5 - Barriers to activities - Activity is not available locally	25	24	35	13
	CT_5 - Barriers to activities - Lack of transport	19	21	28	17
Engagement & Achievement	NI 117 - 16-18 year olds NEET <sup>1</sup>	4.7	5.2	9.7	2.2
	NI 78 - 5+ A*- C GCSEs inc. English and Maths (Floor) <i>School-based</i>	1/3	29	100	0
	NI 72 - 78+ points across the EYFS <i>School-based</i>	49	46	33	69
	NI 72 - 78+ points across the EYFS <i>Home-based</i>	48		34	67
	NI 73 - Level 4+ in both English and Maths at Key Stage 2 <i>School-based</i>	66	69	54	81
	NI 73 - Level 4+ in both English and Maths at Key Stage 2 <i>Home-based</i>	67		56	80
	NI 75 - 5+ A*- C GCSEs incl. English and Maths <i>School-based</i>	35.3	49.5	17.6	75.9
	NI 75 - 5+ A*- C GCSEs incl. English and Maths <i>Home-based</i>	47.7		39.1	66.7
	NI 79 - Level 2 qualification by age 19 <sup>1 4</sup> <i>School-based</i>	70.6	71.2	63.8	80.8
	NI 80 - Level 3 qualification by age 19 <sup>1 4</sup> <i>School-based</i>	48.3	47.2	35.5	65.6
	NI 87 - Secondary school persistent absence rate <i>School-based</i>	6.9	6.0	13.6	2.5
	NI 92 - Narrowing EYFS gap <i>School-based</i>	29.7	32.0	39.7	25.0
	NI 92 - Narrowing EYFS gap <i>Home-based</i>	29.9		37.8	26.8
NI 174 - Skills gap in the current workforce <sup>1</sup>	21.3	14.6	21.3	9.4	
Safety	NI 48 - Road traffic accidents <sup>1 4</sup>	5.9	9.5	-42.9	45.0
	NI 70 - Hospital admissions (injuries)	111.8	125.2	182.2	87.0
	CT_7 - Feel safe most days in the area where they live <i>School-based</i>		68	62	79
	CT_7 - Feel safe most days in the area where they live <i>Home-based</i>	81		62	84
	CT_7 - Feel safe most days getting to and from school <i>School-based</i>		67	63	76
	CT_7 - Feel safe most days getting to and from school <i>Home-based</i>	74		63	78
CT_8 - Rate of CYP who are victims of crime <sup>2</sup>	24.0	23.1	37.8	10.3	

<sup>1</sup> Data only available at District level. <sup>2</sup> Data only available at CDRP level. <sup>3</sup> Data shown is for 2005-7. <sup>4</sup> Data shown is for 2006/07.

## Performance Summary for Cranbrook and Paddock Wood

The chart below provides a summary of the relative strengths and weaknesses in respect of performance for this Local Children's Service Partnership (LCSP). The local result for each indicator is shown as a circle, diamond or square according to performance, against the range of results for the county which is shown as a bar.

### LCSP Performance:

- Lower quartile
- ◆ 'Average'
- Upper quartile

The data shown relates to 2007/08 unless otherwise indicated.

LCSP performance is graded as 'average' if it lies between the 25th and 75th percentile (i.e. is not either lower or upper quartile).

LCSP Worst  LCSP Best  
 25th Percentile 75th Percentile

CYPP Priority	Indicator		Local Value	Kent Value	LCSP Worst		LCSP Best
Poverty	NI 102 - FSM achievement gap (Key Stage 2)	School-based	39	30	39		15
		Home-based	42		42		18
	NI 102 - FSM achievement gap (Key Stage 4)	School-based	33.6	31.9	50.1		4.3
Resilience & Health	NI 55 - Obesity in reception year - School-based		7.4	9.0	12.0		5.6
	NI 112 - Under 18 conception rate <sup>1 3</sup>		-4.7%	-11.6%	14.2%		-23.7%
	CT_1 - Sad or depressed most days	School-based	7	10	18		4
		Home-based	6	17	17		6
	CT_2 - Young people getting drunk at least once a week	School-based	9	9	13		5
		Home-based	5		13		5
Parenting	NI 32 - Repeat incidents of domestic abuse <sup>2</sup>		25.0	23.1	25.0		20.5
	KCC_2010 - Parents supported through Children's Centres		0	16,198	0		3,113
	CT_4 - MMR immunisations by 2nd birthday <sup>1</sup>		86	86	80		91
Vulnerable Children	NI 104 - SEN/non-SEN gap (Key Stage 2)	School-based	49		64		45
		Home-based	52		64		44
	NI 105 - SEN/non-SEN gap (Key Stage 4)	School-based	59.7	47.3	60.3		17.2
	PAF - Health checks and dental checks for LAC <sup>1</sup>		74	60	41		89
Things to Do	NI 111 - First time entrants to the Youth Justice System <sup>1</sup>		6.6	16.6	23.1		6.6
	CT_6 - Have their say at school/college	School-based	67	68	59		84
		Home-based	72		62		80
	CT_6 - Have their say in their local area	School-based	27	36	27		42
		Home-based	28		28		46
	CT_5 - Barriers to activities - Cost		44	32	44		21
	CT_5 - Barriers to activities - Activity is not available locally		35	24	35		13
	CT_5 - Barriers to activities - Lack of transport		28	21	28		17
Engagement & Achievement	NI 117 - 16-18 year olds NEET <sup>1 8</sup>		2.2	5.2	9.7		2.2
	NI 78 - 5+ A*- C GCSEs inc. English and Maths (Floor)	School-based	0	29	100		0
	NI 72 - 78+ points across the EYFS	School-based	69	46	33		69
		Home-based	67		34		67
	NI 73 - Level 4+ in both English and Maths at Key Stage 2	School-based	73	69	54		81
		Home-based	72		56		80
	NI 75 - 5+ A*- C GCSEs incl. English and Maths	School-based	58.8	49.5	17.6		75.9
		Home-based	63.2		39.1		66.7
	NI 79 - Level 2 qualification by age 19 <sup>1 4</sup>	School-based	80.8	71.2	63.8		80.8
	NI 80 - Level 3 qualification by age 19 <sup>1 4</sup>	School-based	65.6	47.2	35.5		65.6
	NI 87 - Secondary school persistent absence rate	School-based	7.1	6.0	13.6		2.5
	Safety	NI 92 - Narrowing EYFS gap	School-based	36.3	32.0	39.7	
		Home-based	37.8		37.8		26.8
NI 174 - Skills gap in the current workforce <sup>1</sup>			16.6	14.6	21.3		9.4
NI 48 - Road traffic accidents <sup>1 4</sup>			11.1	9.5	-42.9		45.0
NI 70 - Hospital admissions (injuries)			147.7	125.2	182.2		87.0
CT_7 - Feel safe most days in the area where they live		School-based	79	68	62		79
		Home-based	84		62		84
CT_7 - Feel safe most days getting to and from school		School-based	76	67	63		76
	Home-based	78		63		78	
CT_8 - Rate of CYP who are victims of crime <sup>2</sup>		17.1	23.1	37.8		10.3	

<sup>1</sup> Data only available at District level. <sup>2</sup> Data only available at CDRP level. <sup>3</sup> Data shown is for 2005-7. <sup>4</sup> Data shown is for 2006/07.



## Performance Summary for Dartford East

The chart below provides a summary of the relative strengths and weaknesses in respect of performance for this Local Children's Service Partnership (LCSP). The local result for each indicator is shown as a circle, diamond or square according to performance, against the range of results for the county which is shown as a bar.

### LCSP Performance:

- Lower quartile
- ◆ 'Average'
- Upper quartile

The data shown relates to 2007/08 unless otherwise indicated.

LCSP performance is graded as 'average' if it lies between the 25th and 75th percentile (i.e. is not either lower or upper quartile).



CYPP Priority	Indicator		Local Value	Kent Value	LCSP Worst		LCSP Best
Poverty	NI 102 - FSM achievement gap (Key Stage 2)	School-based	28	30	39		15
		Home-based	24		42		18
	NI 102 - FSM achievement gap (Key Stage 4)	School-based	19.8	31.9	50.1		4.3
Resilience & Health	NI 55 - Obesity in reception year - School-based		8.3	9.0	12.0		5.6
	NI 112 - Under 18 conception rate <sup>1 3</sup>		-7.1%	-11.6%	14.2%		-23.7%
	CT_1 - Sad or depressed most days	School-based	13	10	18		4
		Home-based	12		17		6
	CT_2 - Young people getting drunk at least once a week	School-based	11	9	13		5
		Home-based	6		13		5
Parenting	NI 32 - Repeat incidents of domestic abuse <sup>2</sup>		22.0	23.1	25.0		20.5
	KCC_2010 - Parents supported through Children's Centres		684	16,198	0		3,113
	CT_4 - MMR immunisations by 2nd birthday <sup>1</sup>		82	86	80		91
Vulnerable Children	NI 104 - SEN/non-SEN gap (Key Stage 2)	School-based	57		64		45
		Home-based	51		64		44
	NI 105 - SEN/non-SEN gap (Key Stage 4)	School-based	17.2	47.3	60.3		17.2
	PAF - Health checks and dental checks for LAC <sup>1</sup>		89	60	41		89
Things to Do	NI 111 - First time entrants to the Youth Justice System <sup>1</sup>		14.3	16.6	23.1		6.6
	CT_6 - Have their say at school/college	School-based	60	68	59		84
		Home-based	65		62		80
	CT_6 - Have their say in their local area	School-based	38	36	27		42
		Home-based	37		28		46
	CT_5 - Barriers to activities - Cost		26	32	44		21
	CT_5 - Barriers to activities - Activity is not available locally		22	24	35		13
CT_5 - Barriers to activities - Lack of transport		22	21	28		17	
Engagement & Achievement	NI 117 - 16-18 year olds NEET <sup>1</sup>		4.4	5.2	9.7		2.2
	NI 78 - 5+ A*- C GCSEs incl. English and Maths (Floor)	School-based	2/2	29	100		0
		School-based	42	46	33		69
	NI 72 - 78+ points across the EYFS	Home-based	45		34		67
	NI 73 - Level 4+ in both English and Maths at Key Stage 2	School-based	72	69	54		81
		Home-based	77		56		80
	NI 75 - 5+ A*- C GCSEs incl. English and Maths	School-based	17.6	49.5	17.6		75.9
		Home-based	46.1		39.1		66.7
	NI 79 - Level 2 qualification by age 19 <sup>1 4</sup>	School-based	70.1	71.2	63.8		80.8
	NI 80 - Level 3 qualification by age 19 <sup>1 4</sup>	School-based	49.6	47.2	35.5		65.6
	NI 87 - Secondary school persistent absence rate	School-based	10.8	6.0	13.6		2.5
Safety	NI 92 - Narrowing EYFS gap	School-based	39.7	32.0	39.7		25.0
		Home-based	33.8		37.8		26.8
	NI 174 - Skills gap in the current workforce <sup>1</sup>		18.7	14.6	21.3		9.4
	NI 48 - Road traffic accidents <sup>1 4</sup>		-28.6	9.5	-42.9		45.0
	NI 70 - Hospital admissions (injuries)		126.2	125.2	182.2		87.0
	CT_7 - Feel safe most days in the area where they live	School-based	65	68	62		79
	Home-based	66		62		84	
	CT_7 - Feel safe most days getting to and from school	School-based	69	67	63		76
		Home-based	74		63		78
	CT_8 - Rate of CYP who are victims of crime <sup>2</sup>		25.6	23.1	37.8		10.3

<sup>1</sup> Data only available at District level. <sup>2</sup> Data only available at CDRP level. <sup>3</sup> Data shown is for 2005-7. <sup>4</sup> Data shown is for 2006/07.



## Performance Summary for Dartford West

The chart below provides a summary of the relative strengths and weaknesses in respect of performance for this Local Children's Service Partnership (LCSP). The local result for each indicator is shown as a circle, diamond or square according to performance, against the range of results for the county which is shown as a bar.

### LCSP Performance:

- Lower quartile
- ◆ 'Average'
- Upper quartile

The data shown relates to 2007/08 unless otherwise indicated.

LCSP performance is graded as 'average' if it lies between the 25th and 75th percentile (i.e. is not either lower or upper quartile).



CYPP Priority	Indicator		Local Value	Kent Value	LCSP Worst		LCSP Best
Poverty	NI 102 - FSM achievement gap (Key Stage 2)	School-based	28	30	39		15
	NI 102 - FSM achievement gap (Key Stage 4)	Home-based	24		42		18
Resilience & Health	NI 102 - FSM achievement gap (Key Stage 4)	School-based	44.9	31.9	50.1		4.3
	NI 55 - Obesity in reception year - School-based		9.8	9.0	12.0		5.6
	NI 112 - Under 18 conception rate <sup>1 3</sup>		-7.1%	-11.6%	14.2%		-23.7%
	CT_1 - Sad or depressed most days	School-based	10	10	18		4
		Home-based	11		17		6
	CT_2 - Young people getting drunk at least once a week	School-based	6	9	13		5
	Home-based	7		13		5	
Parenting	NI 32 - Repeat incidents of domestic abuse <sup>2</sup>		22.0	23.1	25.0		20.5
	KCC_2010 - Parents supported through Children's Centres		1576	16,198	0		3,113
	CT_4 - MMR immunisations by 2nd birthday <sup>1</sup>		82	86	80		91
Vulnerable Children	NI 104 - SEN/non-SEN gap (Key Stage 2)	School-based	46		64		45
		Home-based	47		64		44
	NI 105 - SEN/non-SEN gap (Key Stage 4)	School-based	57.8	47.3	60.3		17.2
	PAF - Health checks and dental checks for LAC <sup>1</sup>		89	60	41		89
Things to Do	NI 111 - First time entrants to the Youth Justice System <sup>1</sup>		14.3	16.6	23.1		6.6
	CT_6 - Have their say at school/college	School-based	76	68	59		84
		Home-based	72		62		80
	CT_6 - Have their say in their local area	School-based	35	36	27		42
		Home-based	35		28		46
	CT_5 - Barriers to activities - Cost		40	32	44		21
	CT_5 - Barriers to activities - Activity is not available locally		25	24	35		13
CT_5 - Barriers to activities - Lack of transport		21	21	28		17	
Engagement & Achievement	NI 117 - 16-18 year olds NEET <sup>1</sup>		4.4	5.2	9.7		2.2
	NI 78 - 5+ A*- C GCSEs incl. English and Maths (Floor)	School-based	1/7	29	100		0
		School-based	39	46	33		69
	NI 72 - 78+ points across the EYFS	Home-based	37		34		67
	NI 73 - Level 4+ in both English and Maths at Key Stage 2	School-based	75	69	54		81
		Home-based	74		56		80
	NI 75 - 5+ A*- C GCSEs incl. English and Maths	School-based	66.5	49.5	17.6		75.9
		Home-based	51.0		39.1		66.7
	NI 79 - Level 2 qualification by age 19 <sup>1 4</sup>	School-based	70.1	71.2	63.8		80.8
	NI 80 - Level 3 qualification by age 19 <sup>1 4</sup>	School-based	49.6	47.2	35.5		65.6
	NI 87 - Secondary school persistent absence rate	School-based	2.5	6.0	13.6		2.5
	Safety	NI 92 - Narrowing EYFS gap	School-based	26.6	32.0	39.7	
		Home-based	28.1		37.8		26.8
NI 174 - Skills gap in the current workforce <sup>1</sup>			18.7	14.6	21.3		9.4
NI 48 - Road traffic accidents <sup>1 4</sup>			-28.6	9.5	-42.9		45.0
NI 70 - Hospital admissions (injuries)			118.8	125.2	182.2		87.0
CT_7 - Feel safe most days in the area where they live		School-based	66	68	62		79
		Home-based	62		62		84
CT_7 - Feel safe most days getting to and from school	School-based	68	67	63		76	
	Home-based	63		63		78	
CT_8 - Rate of CYP who are victims of crime <sup>2</sup>		25.6	23.1	37.8		10.3	

<sup>1</sup> Data only available at District level. <sup>2</sup> Data only available at CDRP level. <sup>3</sup> Data shown is for 2005-7. <sup>4</sup> Data shown is for 2006/07.

# Performance Summary for Deal and Sandwich

The chart below provides a summary of the relative strengths and weaknesses in respect of performance for this Local Children's Service Partnership (LCSP). The local result for each indicator is shown as a circle, diamond or square according to performance, against the range of results for the county which is shown as a bar.

### LCSP Performance:

- Lower quartile
- ◆ 'Average'
- Upper quartile

The data shown relates to 2007/08 unless otherwise indicated.

LCSP performance is graded as 'average' if it lies between the 25th and 75th percentile (i.e. is not either lower or upper quartile).



CYPP Priority	Indicator		Local Value	Kent Value	LCSP Worst		LCSP Best
Poverty	NI 102 - FSM achievement gap (Key Stage 2)	School-based	29	30	39		15
	NI 102 - FSM achievement gap (Key Stage 4)	Home-based	32		42		18
Resilience & Health	NI 102 - FSM achievement gap (Key Stage 4)	School-based	6.8	31.9	50.1		4.3
	NI 55 - Obesity in reception year - School-based		9.5	9.0	12.0		5.6
	NI 112 - Under 18 conception rate <sup>1 3</sup>		-17.0%	-11.6%	14.2%		-23.7%
	CT_1 - Sad or depressed most days	School-based	10	10	18		4
		Home-based	9		17		6
	CT_2 - Young people getting drunk at least once a week	School-based	12	9	13		5
	Home-based	12		13		5	
Parenting	NI 32 - Repeat incidents of domestic abuse <sup>2</sup>		23.1	23.1	25.0		20.5
	KCC_2010 - Parents supported through Children's Centres		545	16,198	0		3,113
	CT_4 - MMR immunisations by 2nd birthday <sup>1</sup>		91	86	80		91
Vulnerable Children	NI 104 - SEN/non-SEN gap (Key Stage 2)	School-based	45		64		45
		Home-based	48		64		44
	NI 105 - SEN/non-SEN gap (Key Stage 4)	School-based	45.3	47.3	60.3		17.2
	PAF - Health checks and dental checks for LAC <sup>1</sup>		53	60	41		89
Things to Do	NI 111 - First time entrants to the Youth Justice System <sup>1</sup>		12.8	16.6	23.1		6.6
	CT_6 - Have their say at school/college	School-based	72	68	59		84
		Home-based	74		62		80
	CT_6 - Have their say in their local area	School-based	41	36	27		42
		Home-based	41		28		46
	CT_5 - Barriers to activities - Cost		34	32	44		21
	CT_5 - Barriers to activities - Activity is not available locally		31	24	35		13
CT_5 - Barriers to activities - Lack of transport		26	21	28		17	
Engagement & Achievement	NI 117 - 16-18 year olds NEET <sup>1</sup>		6.3	5.2	9.7		2.2
	NI 78 - 5+ A*- C GCSEs inc. English and Maths (Floor)	School-based	0	29	100		0
		School-based	47	46	33		69
		Home-based	47		34		67
	NI 72 - 78+ points across the EYFS	School-based	69	69	54		81
		Home-based	68		56		80
	NI 73 - Level 4+ in both English and Maths at Key Stage 2	School-based	48.3	49.5	17.6		75.9
		Home-based	51.5		39.1		66.7
	NI 79 - Level 2 qualification by age 19 <sup>1 4</sup>	School-based	70.9	71.2	63.8		80.8
	NI 80 - Level 3 qualification by age 19 <sup>1 4</sup>	School-based	44.9	47.2	35.5		65.6
	NI 87 - Secondary school persistent absence rate	School-based	6.7	6.0	13.6		2.5
	Safety	NI 92 - Narrowing EYFS gap	School-based	28.0	32.0	39.7	
		Home-based	29.1		37.8		26.8
NI 174 - Skills gap in the current workforce <sup>1</sup>			18.6	14.6	21.3		9.4
NI 48 - Road traffic accidents <sup>1 4</sup>			-42.9	9.5	-42.9		45.0
NI 70 - Hospital admissions (injuries)			101.2	125.2	182.2		87.0
CT_7 - Feel safe most days in the area where they live		School-based	71	68	62		79
		Home-based	71		62		84
CT_7 - Feel safe most days getting to and from school		School-based	68	67	63		76
	Home-based	68		63		78	
	CT_8 - Rate of CYP who are victims of crime <sup>2</sup>		23.6	23.1	37.8		10.3

<sup>1</sup> Data only available at District level. <sup>2</sup> Data only available at CDRP level. <sup>3</sup> Data shown is for 2005-7. <sup>4</sup> Data shown is for 2006/07.

# Performance Summary for Dover

The chart below provides a summary of the relative strengths and weaknesses in respect of performance for this Local Children's Service Partnership (LCSP). The local result for each indicator is shown as a circle, diamond or square according to performance, against the range of results for the county which is shown as a bar.

### LCSP Performance:

- Lower quartile
- ◆ 'Average'
- Upper quartile

The data shown relates to 2007/08 unless otherwise indicated.

LCSP performance is graded as 'average' if it lies between the 25th and 75th percentile (i.e. is not either lower or upper quartile).



CYPP Priority	Indicator		Local Value	Kent Value	LCSP Worst		LCSP Best
Poverty	NI 102 - FSM achievement gap (Key Stage 2)	School-based	28	30	39		15
		Home-based	25		42		18
	NI 102 - FSM achievement gap (Key Stage 4)	School-based	34.0	31.9	50.1		4.3
Resilience & Health	NI 55 - Obesity in reception year - School-based		8.9	9.0	12.0		5.6
	NI 112 - Under 18 conception rate <sup>1 3</sup>		-17.0%	-11.6%	14.2%		-23.7%
	CT_1 - Sad or depressed most days	School-based	9	10	18		4
		Home-based	10	17			6
	CT_2 - Young people getting drunk at least once a week	School-based	12	9	13		5
		Home-based	11		13		5
Parenting	NI 32 - Repeat incidents of domestic abuse <sup>2</sup>		23.1	23.1	25.0		20.5
	KCC_2010 - Parents supported through Children's Centres		1675	16,198	0		3,113
	CT_4 - MMR immunisations by 2nd birthday <sup>1</sup>		91	86	80		91
Vulnerable Children	NI 104 - SEN/non-SEN gap (Key Stage 2)	School-based	55		64		45
		Home-based	52		64		44
	NI 105 - SEN/non-SEN gap (Key Stage 4)	School-based	35.9	47.3	60.3		17.2
	PAF - Health checks and dental checks for LAC <sup>1</sup>		53	60	41		89
Things to Do	NI 111 - First time entrants to the Youth Justice System <sup>1</sup>		12.8	16.6	23.1		6.6
	CT_6 - Have their say at school/college	School-based	69	68	59		84
		Home-based	68		62		80
	CT_6 - Have their say in their local area	School-based	39	36	27		42
		Home-based	40		28		46
	CT_5 - Barriers to activities - Cost		33	32	44		21
CT_5 - Barriers to activities - Activity is not available locally		26	24	35		13	
CT_5 - Barriers to activities - Lack of transport		22	21	28		17	
Engagement & Achievement	NI 117 - 16-18 year olds NEET <sup>1</sup>		6.3	5.2	9.7		2.2
	NI 78 - 5+ A*- C GCSEs inc. English and Maths (Floor)	School-based	3/5	29	100		0
		School-based	47	46	33		69
	NI 72 - 78+ points across the EYFS	Home-based	47		34		67
	NI 73 - Level 4+ in both English and Maths at Key Stage 2	School-based	58	69	54		81
		Home-based	59		56		80
	NI 75 - 5+ A*- C GCSEs incl. English and Maths	School-based	40.8	49.5	17.6		75.9
		Home-based	40.1		39.1		66.7
	NI 79 - Level 2 qualification by age 19 <sup>1 4</sup>	School-based	70.9	71.2	63.8		80.8
	NI 80 - Level 3 qualification by age 19 <sup>1 4</sup>	School-based	44.9	47.2	35.5		65.6
	NI 87 - Secondary school persistent absence rate	School-based	7.9	6.0	13.6		2.5
Safety	NI 92 - Narrowing EYFS gap	School-based	30.7	32.0	39.7		25.0
		Home-based	29.8		37.8		26.8
	NI 174 - Skills gap in the current workforce <sup>1</sup>		18.6	14.6	21.3		9.4
	NI 48 - Road traffic accidents <sup>1 4</sup>		-42.9	9.5	-42.9		45.0
	NI 70 - Hospital admissions (injuries)		102.5	125.2	182.2		87.0
	CT_7 - Feel safe most days in the area where they live	School-based	66	68	62		79
	Home-based	66		62		84	
CT_7 - Feel safe most days getting to and from school	School-based	66	67	63		76	
	Home-based	67		63		78	
	CT_8 - Rate of CYP who are victims of crime <sup>2</sup>		23.6	23.1	37.8		10.3

<sup>1</sup> Data only available at District level. <sup>2</sup> Data only available at CDRP level. <sup>3</sup> Data shown is for 2005-7. <sup>4</sup> Data shown is for 2006/07.

# Performance Summary for Gravesham

The chart below provides a summary of the relative strengths and weaknesses in respect of performance for this Local Children's Service Partnership (LCSP). The local result for each indicator is shown as a circle, diamond or square according to performance, against the range of results for the county which is shown as a bar.

### LCSP Performance:

- Lower quartile
- ◆ 'Average'
- Upper quartile

The data shown relates to 2007/08 unless otherwise indicated.

LCSP performance is graded as 'average' if it lies between the 25th and 75th percentile (i.e. is not either lower or upper quartile).



CYPP Priority	Indicator		Local Value	Kent Value	LCSP Worst		LCSP Best
Poverty	NI 102 - FSM achievement gap (Key Stage 2)	School-based	30	30	39		15
		Home-based	31		42		18
	NI 102 - FSM achievement gap (Key Stage 4)	School-based	33.3	31.9	50.1		4.3
Resilience & Health	NI 55 - Obesity in reception year - School-based		9.6	9.0	12.0		5.6
	NI 112 - Under 18 conception rate <sup>1 3</sup>		-16.8%	-11.6%	14.2%		-23.7%
	CT_1 - Sad or depressed most days	School-based	9	10	18		4
		Home-based	8		17		6
	CT_2 - Young people getting drunk at least once a week	School-based	6	9	13		5
		Home-based	7		13		5
Parenting	NI 32 - Repeat incidents of domestic abuse <sup>2</sup>		22.0	23.1	25.0		20.5
	KCC_2010 - Parents supported through Children's Centres		2495	16,198	0		3,113
	CT_4 - MMR immunisations by 2nd birthday <sup>1</sup>		88	86	80		91
Vulnerable Children	NI 104 - SEN/non-SEN gap (Key Stage 2)	School-based	52		64		45
		Home-based	53		64		44
	NI 105 - SEN/non-SEN gap (Key Stage 4)	School-based	44.9	47.3	60.3		17.2
	PAF - Health checks and dental checks for LAC <sup>1</sup>		69	60	41		89
Things to Do	NI 111 - First time entrants to the Youth Justice System <sup>1</sup>		10.8	16.6	23.1		6.6
	CT_6 - Have their say at school/college	School-based	62	68	59		84
		Home-based	62		62		80
	CT_6 - Have their say in their local area	School-based	38	36	27		42
		Home-based	39		28		46
	CT_5 - Barriers to activities - Cost		21	32	44		21
	CT_5 - Barriers to activities - Activity is not available locally		13	24	35		13
	CT_5 - Barriers to activities - Lack of transport		18	21	28		17
Engagement & Achievement	NI 117 - 16-18 year olds NEET <sup>1</sup>		4.3	5.2	9.7		2.2
	NI 78 - 5+ A*- C GCSEs inc. English and Maths (Floor)	School-based	1/8	29	100		0
		School-based	37	46	33		69
		Home-based	36		34		67
	NI 72 - 78+ points across the EYFS	School-based	71	69	54		81
		Home-based	70		56		80
	NI 73 - Level 4+ in both English and Maths at Key Stage 2	School-based	49.4	49.5	17.6		75.9
		Home-based	46.9		39.1		66.7
	NI 79 - Level 2 qualification by age 19 <sup>1 4</sup>	School-based	66.2	71.2	63.8		80.8
	NI 80 - Level 3 qualification by age 19 <sup>1 4</sup>	School-based	43.7	47.2	35.5		65.6
	NI 87 - Secondary school persistent absence rate	School-based	7.4	6.0	13.6		2.5
Safety	NI 92 - Narrowing EYFS gap	School-based	28.4	32.0	39.7		25.0
		Home-based	28.5		37.8		26.8
	NI 174 - Skills gap in the current workforce <sup>1</sup>		15.9	14.6	21.3		9.4
	NI 48 - Road traffic accidents <sup>1 4</sup>		18.8	9.5	-42.9		45.0
	NI 70 - Hospital admissions (injuries)		111.8	125.2	182.2		87.0
	CT_7 - Feel safe most days in the area where they live	School-based	66	68	62		79
	Home-based	69		62		84	
	CT_7 - Feel safe most days getting to and from school	School-based	72	67	63		76
		Home-based	72		63		78
	CT_8 - Rate of CYP who are victims of crime <sup>2</sup>		25.6	23.1	37.8		10.3

<sup>1</sup> Data only available at District level. <sup>2</sup> Data only available at CDRP level. <sup>3</sup> Data shown is for 2005-7. <sup>4</sup> Data shown is for 2006/07.

# Performance Summary for Maidstone 1

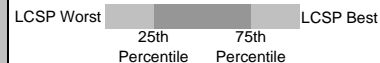
The chart below provides a summary of the relative strengths and weaknesses in respect of performance for this Local Children's Service Partnership (LCSP). The local result for each indicator is shown as a circle, diamond or square according to performance, against the range of results for the county which is shown as a bar.

### LCSP Performance:

- Lower quartile
- ◆ 'Average'
- Upper quartile

The data shown relates to 2007/08 unless otherwise indicated.

LCSP performance is graded as 'average' if it lies between the 25th and 75th percentile (i.e. is not either lower or upper quartile).



CYPP Priority	Indicator		Local Value	Kent Value	LCSP Worst		LCSP Best
Poverty	NI 102 - FSM achievement gap (Key Stage 2)	School-based	37	30	39		15
	NI 102 - FSM achievement gap (Key Stage 4)	Home-based	24		42		18
Resilience & Health	NI 102 - FSM achievement gap (Key Stage 4)	School-based	38.7	31.9	50.1		4.3
	NI 55 - Obesity in reception year - School-based		10.3	9.0	12.0		5.6
	NI 112 - Under 18 conception rate <sup>1 3</sup>		14.2%	-11.6%	14.2%		-23.7%
	CT_1 - Sad or depressed most days	School-based	18	10	18		4
		Home-based	11		17		6
	CT_2 - Young people getting drunk at least once a week	School-based	9	9	13		5
	Home-based	6		13		5	
Parenting	NI 32 - Repeat incidents of domestic abuse <sup>2</sup>		22.8	23.1	25.0		20.5
	KCC_2010 - Parents supported through Children's Centres		0	16,198	0		3,113
	CT_4 - MMR immunisations by 2nd birthday <sup>1</sup>		88	86	80		91
Vulnerable Children	NI 104 - SEN/non-SEN gap (Key Stage 2)	School-based	50		64		45
		Home-based	45		64		44
	NI 105 - SEN/non-SEN gap (Key Stage 4)	School-based	58.8	47.3	60.3		17.2
	PAF - Health checks and dental checks for LAC <sup>1</sup>		51	60	41		89
Things to Do	NI 111 - First time entrants to the Youth Justice System <sup>1</sup>		13.2	16.6	23.1		6.6
	CT_6 - Have their say at school/college	School-based	60	68	59		84
		Home-based	65		62		80
	CT_6 - Have their say in their local area	School-based	32	36	27		42
		Home-based	33		28		46
	CT_5 - Barriers to activities - Cost		33	32	44		21
	CT_5 - Barriers to activities - Activity is not available locally		23	24	35		13
CT_5 - Barriers to activities - Lack of transport		21	21	28		17	
Engagement & Achievement	NI 117 - 16-18 year olds NEET <sup>1</sup>		5.1	5.2	9.7		2.2
	NI 78 - 5+ A*- C GCSEs incl. English and Maths (Floor)	School-based	1/6	29	100		0
	NI 72 - 78+ points across the EYFS	School-based	62	46	33		69
		Home-based	62		34		67
	NI 73 - Level 4+ in both English and Maths at Key Stage 2	School-based	73	69	54		81
		Home-based	75		56		80
	NI 75 - 5+ A*- C GCSEs incl. English and Maths	School-based	58.5	49.5	17.6		75.9
		Home-based	55.4		39.1		66.7
	NI 79 - Level 2 qualification by age 19 <sup>1 4</sup>	School-based	78.0	71.2	63.8		80.8
	NI 80 - Level 3 qualification by age 19 <sup>1 4</sup>	School-based	52.9	47.2	35.5		65.6
	NI 87 - Secondary school persistent absence rate	School-based	7.3	6.0	13.6		2.5
Safety	NI 92 - Narrowing EYFS gap	School-based	33.2	32.0	39.7		25.0
		Home-based	30.5		37.8		26.8
	NI 174 - Skills gap in the current workforce <sup>1</sup>		12.3	14.6	21.3		9.4
	NI 48 - Road traffic accidents <sup>1 4</sup>		15.4	9.5	-42.9		45.0
	NI 70 - Hospital admissions (injuries)		111.9	125.2	182.2		87.0
	CT_7 - Feel safe most days in the area where they live	School-based	62	68	62		79
		Home-based	70		62		84
CT_7 - Feel safe most days getting to and from school	School-based	66	67	63		76	
	Home-based	65		63		78	
CT_8 - Rate of CYP who are victims of crime <sup>2</sup>		21.4	23.1	37.8		10.3	

<sup>1</sup> Data only available at District level. <sup>2</sup> Data only available at CDRP level. <sup>3</sup> Data shown is for 2005-7. <sup>4</sup> Data shown is for 2006/07.

## Performance Summary for Maidstone 2

The chart below provides a summary of the relative strengths and weaknesses in respect of performance for this Local Children's Service Partnership (LCSP). The local result for each indicator is shown as a circle, diamond or square according to performance, against the range of results for the county which is shown as a bar.

### LCSP Performance:

- Lower quartile
- ◆ 'Average'
- Upper quartile

The data shown relates to 2007/08 unless otherwise indicated.

LCSP performance is graded as 'average' if it lies between the 25th and 75th percentile (i.e. is not either lower or upper quartile).



CYPP Priority	Indicator		Local Value	Kent Value	LCSP Worst		LCSP Best
Poverty	NI 102 - FSM achievement gap (Key Stage 2)	School-based	34	30	39	<span style="color: red;">●</span>	15
		Home-based	37		42	<span style="color: red;">●</span>	18
	NI 102 - FSM achievement gap (Key Stage 4)	School-based	31.9	31.9	50.1	<span style="color: black;">◆</span>	4.3
Resilience & Health	NI 55 - Obesity in reception year - School-based		9.6	9.0	12.0	<span style="color: black;">◆</span>	5.6
	NI 112 - Under 18 conception rate <sup>1 3</sup>		14.2%	-11.6%	14.2%	<span style="color: red;">●</span>	-23.7%
	CT_1 - Sad or depressed most days	School-based	12	10	18	<span style="color: red;">●</span>	4
		Home-based	17		17	<span style="color: red;">●</span>	6
	CT_2 - Young people getting drunk at least once a week	School-based	8	9	13	<span style="color: black;">◆</span>	5
	Home-based	7		13	<span style="color: black;">◆</span>	5	
Parenting	NI 32 - Repeat incidents of domestic abuse <sup>2</sup>		22.8	23.1	25.0	<span style="color: black;">◆</span>	20.5
	KCC_2010 - Parents supported through Children's Centres		329	16,198	0	<span style="color: black;">◆</span>	3,113
	CT_4 - MMR immunisations by 2nd birthday <sup>1</sup>		88	86	80	<span style="color: green;">■</span>	91
Vulnerable Children	NI 104 - SEN/non-SEN gap (Key Stage 2)	School-based	55		64	<span style="color: black;">◆</span>	45
		Home-based	57		64	<span style="color: red;">●</span>	44
	NI 105 - SEN/non-SEN gap (Key Stage 4)	School-based	57.3	47.3	60.3	<span style="color: red;">●</span>	17.2
	PAF - Health checks and dental checks for LAC <sup>1</sup>		51	60	41	<span style="color: red;">●</span>	89
Things to Do	NI 111 - First time entrants to the Youth Justice System <sup>1</sup>		13.2	16.6	23.1	<span style="color: black;">◆</span>	6.6
	CT_6 - Have their say at school/college	School-based	64	68	59	<span style="color: black;">◆</span>	84
		Home-based	63		62	<span style="color: red;">●</span>	80
	CT_6 - Have their say in their local area	School-based	37	36	27	<span style="color: black;">◆</span>	42
		Home-based	38		28	<span style="color: black;">◆</span>	46
	CT_5 - Barriers to activities - Cost		29	32	44	<span style="color: green;">■</span>	21
	CT_5 - Barriers to activities - Activity is not available locally		20	24	35	<span style="color: green;">■</span>	13
	CT_5 - Barriers to activities - Lack of transport		21	21	28	<span style="color: black;">◆</span>	17
Engagement & Achievement	NI 117 - 16-18 year olds NEET <sup>1</sup>		5.1	5.2	9.7	<span style="color: black;">◆</span>	2.2
	NI 78 - 5+ A*- C GCSEs incl. English and Maths (Floor)	School-based	1/5	29	100	<span style="color: black;">◆</span>	0
		Home-based	46	46	33	<span style="color: black;">◆</span>	69
	NI 72 - 78+ points across the EYFS	Home-based	48		34	<span style="color: black;">◆</span>	67
	NI 73 - Level 4+ in both English and Maths at Key Stage 2	School-based	72	69	54	<span style="color: black;">◆</span>	81
		Home-based	71		56	<span style="color: black;">◆</span>	80
	NI 75 - 5+ A*- C GCSEs incl. English and Maths	School-based	52.4	49.5	17.6	<span style="color: black;">◆</span>	75.9
		Home-based	62.6		39.1	<span style="color: green;">■</span>	66.7
	NI 79 - Level 2 qualification by age 19 <sup>1 4</sup>	School-based	78.0	71.2	63.8	<span style="color: green;">■</span>	80.8
	NI 80 - Level 3 qualification by age 19 <sup>1 4</sup>	School-based	52.9	47.2	35.5	<span style="color: green;">■</span>	65.6
	NI 87 - Secondary school persistent absence rate	School-based	7.3	6.0	13.6	<span style="color: black;">◆</span>	2.5
Safety	NI 92 - Narrowing EYFS gap	School-based	30.6	32.0	39.7	<span style="color: black;">◆</span>	25.0
		Home-based	29.6		37.8	<span style="color: black;">◆</span>	26.8
	NI 174 - Skills gap in the current workforce <sup>1</sup>		12.3	14.6	21.3	<span style="color: black;">◆</span>	9.4
	NI 48 - Road traffic accidents <sup>1 4</sup>		15.4	9.5	-42.9	<span style="color: black;">◆</span>	45.0
	NI 70 - Hospital admissions (injuries)		125.4	125.2	182.2	<span style="color: black;">◆</span>	87.0
	CT_7 - Feel safe most days in the area where they live	School-based	67	68	62	<span style="color: black;">◆</span>	79
		Home-based	64		62	<span style="color: red;">●</span>	84
	CT_7 - Feel safe most days getting to and from school	School-based	65	67	63	<span style="color: black;">◆</span>	76
	Home-based	66		63	<span style="color: black;">◆</span>	78	
CT_8 - Rate of CYP who are victims of crime <sup>2</sup>		21.4	23.1	37.8	<span style="color: black;">◆</span>	10.3	

<sup>1</sup> Data only available at District level. <sup>2</sup> Data only available at CDRP level. <sup>3</sup> Data shown is for 2005-7. <sup>4</sup> Data shown is for 2006/07.

## Performance Summary for Malling

The chart below provides a summary of the relative strengths and weaknesses in respect of performance for this Local Children's Service Partnership (LCSP). The local result for each indicator is shown as a circle, diamond or square according to performance, against the range of results for the county which is shown as a bar.

### LCSP Performance:

- Lower quartile
- ◆ 'Average'
- Upper quartile

The data shown relates to 2007/08 unless otherwise indicated.

LCSP performance is graded as 'average' if it lies between the 25th and 75th percentile (i.e. is not either lower or upper quartile).



CYPP Priority	Indicator		Local Value	Kent Value	LCSP Worst		LCSP Best
Poverty	NI 102 - FSM achievement gap (Key Stage 2)	School-based	29	30	39		15
		Home-based	31		42		18
	NI 102 - FSM achievement gap (Key Stage 4)	School-based	4.3	31.9	50.1		4.3
Resilience & Health	NI 55 - Obesity in reception year - School-based		8.1	9.0	12.0		5.6
	NI 112 - Under 18 conception rate <sup>1 3</sup>		-1.4%	-11.6%	14.2%		-23.7%
	CT_1 - Sad or depressed most days	School-based	11	10	18		4
		Home-based	13		17		6
	CT_2 - Young people getting drunk at least once a week	School-based	6	9	13		5
	Home-based	6		13		5	
Parenting	NI 32 - Repeat incidents of domestic abuse <sup>2</sup>		23.2	23.1	25.0		20.5
	KCC_2010 - Parents supported through Children's Centres		0	16,198	0		3,113
	CT_4 - MMR immunisations by 2nd birthday <sup>1</sup>		87	86	80		91
Vulnerable Children	NI 104 - SEN/non-SEN gap (Key Stage 2)	School-based	47		64		45
		Home-based	50		64		44
	NI 105 - SEN/non-SEN gap (Key Stage 4)	School-based	34.7	47.3	60.3		17.2
	PAF - Health checks and dental checks for LAC <sup>1</sup>		84	60	41		89
Things to Do	NI 111 - First time entrants to the Youth Justice System <sup>1</sup>		8.1	16.6	23.1		6.6
	CT_6 - Have their say at school/college	School-based	64	68	59		84
		Home-based	69		62		80
	CT_6 - Have their say in their local area	School-based	39	36	27		42
		Home-based	38		28		46
	CT_5 - Barriers to activities - Cost		28	32	44		21
	CT_5 - Barriers to activities - Activity is not available locally		25	24	35		13
CT_5 - Barriers to activities - Lack of transport		27	21	28		17	
Engagement & Achievement	NI 117 - 16-18 year olds NEET <sup>1 8</sup>		2.2	5.2	9.7		2.2
	NI 78 - 5+ A*- C GCSEs inc. English and Maths (Floor)	School-based	2/4	29	100		0
		School-based	51	46	33		69
	NI 72 - 78+ points across the EYFS	Home-based	50		34		67
	NI 73 - Level 4+ in both English and Maths at Key Stage 2	School-based	81	69	54		81
		Home-based	80		56		80
	NI 75 - 5+ A*- C GCSEs incl. English and Maths	School-based	30.2	49.5	17.6		75.9
		Home-based	53.2		39.1		66.7
	NI 79 - Level 2 qualification by age 19 <sup>1 4</sup>	School-based	75.4	71.2	63.8		80.8
	NI 80 - Level 3 qualification by age 19 <sup>1 4</sup>	School-based	53.4	47.2	35.5		65.6
	NI 87 - Secondary school persistent absence rate	School-based	7.6	6.0	13.6		2.5
	Safety	NI 92 - Narrowing EYFS gap	School-based	28.3	32.0	39.7	
		Home-based	29.8		37.8		26.8
NI 174 - Skills gap in the current workforce <sup>1</sup>			9.4	14.6	21.3		9.4
NI 48 - Road traffic accidents <sup>1 4</sup>			45.0	9.5	-42.9		45.0
NI 70 - Hospital admissions (injuries)			122.2	125.2	182.2		87.0
CT_7 - Feel safe most days in the area where they live		School-based	66	68	62		79
	Home-based	65		62		84	
CT_7 - Feel safe most days getting to and from school	School-based	69	67	63		76	
	Home-based	68		63		78	
CT_8 - Rate of CYP who are victims of crime <sup>2</sup>		17.3	23.1	37.8		10.3	

<sup>1</sup> Data only available at District level. <sup>2</sup> Data only available at CDRP level. <sup>3</sup> Data shown is for 2005-7. <sup>4</sup> Data shown is for 2006/07.



## Performance Summary for Sevenoaks South

The chart below provides a summary of the relative strengths and weaknesses in respect of performance for this Local Children's Service Partnership (LCSP). The local result for each indicator is shown as a circle, diamond or square according to performance, against the range of results for the county which is shown as a bar.

### LCSP Performance:

- Lower quartile
- ◆ 'Average'
- Upper quartile

The data shown relates to 2007/08 unless otherwise indicated.

LCSP performance is graded as 'average' if it lies between the 25th and 75th percentile (i.e. is not either lower or upper quartile).

LCSP Worst  LCSP Best  
 25th Percentile 75th Percentile

CYPP Priority	Indicator		Local Value	Kent Value	LCSP Worst		LCSP Best
Poverty	NI 102 - FSM achievement gap (Key Stage 2)	School-based	24	30	39		15
	NI 102 - FSM achievement gap (Key Stage 4)	Home-based	25		42		18
Resilience & Health	NI 102 - FSM achievement gap (Key Stage 4)	School-based	18.5	31.9	50.1		4.3
	NI 55 - Obesity in reception year - School-based		6.2	9.0	12.0		5.6
	NI 112 - Under 18 conception rate <sup>1 3</sup>		-4.0%	-11.6%	14.2%		-23.7%
	CT_1 - Sad or depressed most days	School-based	4	10	18		4
		Home-based	7		17		6
	CT_2 - Young people getting drunk at least once a week	School-based	12	9	13		5
	Home-based	8		13		5	
Parenting	NI 32 - Repeat incidents of domestic abuse <sup>2</sup>		20.5	23.1	25.0		20.5
	KCC_2010 - Parents supported through Children's Centres		0	16,198	0		3,113
	CT_4 - MMR immunisations by 2nd birthday <sup>1</sup>		82	86	80		91
Vulnerable Children	NI 104 - SEN/non-SEN gap (Key Stage 2)	School-based	45		64		45
		Home-based	44		64		44
	NI 105 - SEN/non-SEN gap (Key Stage 4)	School-based	46.9	47.3	60.3		17.2
	PAF - Health checks and dental checks for LAC <sup>1</sup>		60	60	41		89
Things to Do	NI 111 - First time entrants to the Youth Justice System <sup>1</sup>		8.0	16.6	23.1		6.6
	CT_6 - Have their say at school/college	School-based	66	68	59		84
		Home-based	75		62		80
	CT_6 - Have their say in their local area	School-based	30	36	27		42
		Home-based	34		28		46
	CT_5 - Barriers to activities - Cost		34	32	44		21
	CT_5 - Barriers to activities - Activity is not available locally		32	24	35		13
	CT_5 - Barriers to activities - Lack of transport		23	21	28		17
Engagement & Achievement	NI 117 - 16-18 year olds NEET <sup>1 8</sup>		2.2	5.2	9.7		2.2
	NI 78 - 5+ A*- C GCSEs inc. English and Maths (Floor)	School-based	0	29	100		0
	NI 72 - 78+ points across the EYFS	School-based	68	46	33		69
		Home-based	67		34		67
	NI 73 - Level 4+ in both English and Maths at Key Stage 2	School-based	71	69	54		81
		Home-based	69		56		80
	NI 75 - 5+ A*- C GCSEs incl. English and Maths	School-based	38.0	49.5	17.6		75.9
		Home-based	64.7		39.1		66.7
	NI 79 - Level 2 qualification by age 19 <sup>1 4</sup>	School-based	66.6	71.2	63.8		80.8
	NI 80 - Level 3 qualification by age 19 <sup>1 4</sup>	School-based	43.0	47.2	35.5		65.6
	NI 87 - Secondary school persistent absence rate	School-based	8.5	6.0	13.6		2.5
	NI 92 - Narrowing EYFS gap	School-based	33.9	32.0	39.7		25.0
		Home-based	27.7		37.8		26.8
NI 174 - Skills gap in the current workforce <sup>1</sup>		9.7	14.6	21.3		9.4	
Safety	NI 48 - Road traffic accidents <sup>1 4</sup>		21.4	9.5	-42.9		45.0
	NI 70 - Hospital admissions (injuries)		144.5	125.2	182.2		87.0
	CT_7 - Feel safe most days in the area where they live	School-based	67	68	62		79
		Home-based	78		62		84
	CT_7 - Feel safe most days getting to and from school	School-based	67	67	63		76
		Home-based	71		63		78
CT_8 - Rate of CYP who are victims of crime <sup>2</sup>		10.3	23.1	37.8		10.3	

<sup>1</sup> Data only available at District level. <sup>2</sup> Data only available at CDRP level. <sup>3</sup> Data shown is for 2005-7. <sup>4</sup> Data shown is for 2006/07.



# Performance Summary for Shepway 1

The chart below provides a summary of the relative strengths and weaknesses in respect of performance for this Local Children's Service Partnership (LCSP). The local result for each indicator is shown as a circle, diamond or square according to performance, against the range of results for the county which is shown as a bar.

### LCSP Performance:

- Lower quartile
- ◆ 'Average'
- Upper quartile

The data shown relates to 2007/08 unless otherwise indicated.

LCSP performance is graded as 'average' if it lies between the 25th and 75th percentile (i.e. is not either lower or upper quartile).



CYPP Priority	Indicator		Local Value	Kent Value	LCSP Worst		LCSP Best
Poverty	NI 102 - FSM achievement gap (Key Stage 2)	School-based	17	30	39		15
	NI 102 - FSM achievement gap (Key Stage 4)	Home-based	18		42		18
Resilience & Health	NI 55 - Obesity in reception year - School-based		11.0	9.0	12.0		5.6
	NI 112 - Under 18 conception rate <sup>1 3</sup>		-19.5%	-11.6%	14.2%		-23.7%
	CT_1 - Sad or depressed most days	School-based	11	10	18		4
		Home-based	9		17		6
	CT_2 - Young people getting drunk at least once a week	School-based	12	9	13		5
		Home-based	9		13		5
Parenting	NI 32 - Repeat incidents of domestic abuse <sup>2</sup>		24.5	23.1	25.0		20.5
	KCC_2010 - Parents supported through Children's Centres		1482	16,198	0		3,113
	CT_4 - MMR immunisations by 2nd birthday <sup>1</sup>		87	86	80		91
Vulnerable Children	NI 104 - SEN/non-SEN gap (Key Stage 2)	School-based	47		64		45
		Home-based	47		64		44
	NI 105 - SEN/non-SEN gap (Key Stage 4)	School-based	43.5	47.3	60.3		17.2
	PAF - Health checks and dental checks for LAC <sup>1</sup>		50	60	41		89
Things to Do	NI 111 - First time entrants to the Youth Justice System <sup>1</sup>		18.8	16.6	23.1		6.6
	CT_6 - Have their say at school/college	School-based	73	68	59		84
		Home-based	64		62		80
	CT_6 - Have their say in their local area	School-based	40	36	27		42
		Home-based	34		28		46
	CT_5 - Barriers to activities - Cost		34	32	44		21
	CT_5 - Barriers to activities - Activity is not available locally		22	24	35		13
	CT_5 - Barriers to activities - Lack of transport		21	21	28		17
Engagement & Achievement	NI 117 - 16-18 year olds NEET <sup>1</sup>		6.9	5.2	9.7		2.2
	NI 78 - 5+ A*- C GCSEs inc. English and Maths (Floor)	School-based	1/4	29	100		0
		School-based	42	46	33		69
		Home-based	41		34		67
	NI 72 - 78+ points across the EYFS	School-based	59	69	54		81
		Home-based	60		56		80
	NI 73 - Level 4+ in both English and Maths at Key Stage 2	School-based	52.9	49.5	17.6		75.9
		Home-based	46.4		39.1		66.7
	NI 79 - Level 2 qualification by age 19 <sup>1 4</sup>	School-based	67.6	71.2	63.8		80.8
	NI 80 - Level 3 qualification by age 19 <sup>1 4</sup>	School-based	35.5	47.2	35.5		65.6
	NI 87 - Secondary school persistent absence rate	School-based	6.7	6.0	13.6		2.5
	Safety	NI 92 - Narrowing EYFS gap	School-based	27.0	32.0	39.7	
		Home-based	32.4		37.8		26.8
NI 174 - Skills gap in the current workforce <sup>1</sup>			9.8	14.6	21.3		9.4
NI 48 - Road traffic accidents <sup>1 4</sup>			42.9	9.5	-42.9		45.0
NI 70 - Hospital admissions (injuries)			101.3	125.2	182.2		87.0
CT_7 - Feel safe most days in the area where they live		School-based	71	68	62		79
		Home-based	69		62		84
CT_7 - Feel safe most days getting to and from school		School-based	64	67	63		76
	Home-based	66		63		78	
	CT_8 - Rate of CYP who are victims of crime <sup>2</sup>		25.9	23.1	37.8		10.3

<sup>1</sup> Data only available at District level. <sup>2</sup> Data only available at CDRP level. <sup>3</sup> Data shown is for 2005-7. <sup>4</sup> Data shown is for 2006/07.

## Performance Summary for Shepway Rural

The chart below provides a summary of the relative strengths and weaknesses in respect of performance for this Local Children's Service Partnership (LCSP). The local result for each indicator is shown as a circle, diamond or square according to performance, against the range of results for the county which is shown as a bar.

### LCSP Performance:

- Lower quartile
- ◆ 'Average'
- Upper quartile

The data shown relates to 2007/08 unless otherwise indicated.

LCSP performance is graded as 'average' if it lies between the 25th and 75th percentile (i.e. is not either lower or upper quartile).



CYPP Priority	Indicator		Local Value	Kent Value	LCSP Worst		LCSP Best
Poverty	NI 102 - FSM achievement gap (Key Stage 2)	School-based	36	30	39		15
		Home-based	33		42		18
	NI 102 - FSM achievement gap (Key Stage 4)	School-based	7.6	31.9	50.1		4.3
Resilience & Health	NI 55 - Obesity in reception year - School-based		7.6	9.0	12.0		5.6
	NI 112 - Under 18 conception rate <sup>1 3</sup>		-19.5%	-11.6%	14.2%		-23.7%
	CT_1 - Sad or depressed most days	School-based	10	10	18		4
		Home-based	8		17		6
	CT_2 - Young people getting drunk at least once a week	School-based	12	9	13		5
		Home-based	9		13		5
Parenting	NI 32 - Repeat incidents of domestic abuse <sup>2</sup>		24.5	23.1	25.0		20.5
	KCC_2010 - Parents supported through Children's Centres		463	16,198	0		3,113
	CT_4 - MMR immunisations by 2nd birthday <sup>1</sup>		87	86	80		91
Vulnerable Children	NI 104 - SEN/non-SEN gap (Key Stage 2)	School-based	46		64		45
		Home-based	46		64		44
	NI 105 - SEN/non-SEN gap (Key Stage 4)	School-based	20.7	47.3	60.3		17.2
	PAF - Health checks and dental checks for LAC <sup>1</sup>		50	60	41		89
Things to Do	NI 111 - First time entrants to the Youth Justice System <sup>1</sup>		18.8	16.6	23.1		6.6
	CT_6 - Have their say at school/college	School-based	59	68	59		84
		Home-based	62		62		80
	CT_6 - Have their say in their local area	School-based	30	36	27		42
		Home-based	31		28		46
	CT_5 - Barriers to activities - Cost		38	32	44		21
	CT_5 - Barriers to activities - Activity is not available locally		25	24	35		13
CT_5 - Barriers to activities - Lack of transport		22	21	28		17	
Engagement & Achievement	NI 117 - 16-18 year olds NEET <sup>1</sup>		6.9	5.2	9.7		2.2
	NI 78 - 5+ A*- C GCSEs inc. English and Maths (Floor)	School-based	1/2	29	100		0
		School-based	49	46	33		69
	NI 72 - 78+ points across the EYFS	Home-based	51		34		67
	NI 73 - Level 4+ in both English and Maths at Key Stage 2	School-based	68	69	54		81
		Home-based	68		56		80
	NI 75 - 5+ A*- C GCSEs incl. English and Maths	School-based	29.4	49.5	17.6		75.9
		Home-based	60.5		39.1		66.7
	NI 79 - Level 2 qualification by age 19 <sup>1 4</sup>	School-based	67.6	71.2	63.8		80.8
	NI 80 - Level 3 qualification by age 19 <sup>1 4</sup>	School-based	35.5	47.2	35.5		65.6
	NI 87 - Secondary school persistent absence rate	School-based	10.7	6.0	13.6		2.5
	NI 92 - Narrowing EYFS gap	School-based	34.7	32.0	39.7		25.0
		Home-based	28.4		37.8		26.8
NI 174 - Skills gap in the current workforce <sup>1</sup>		9.8	14.6	21.3		9.4	
Safety	NI 48 - Road traffic accidents <sup>1 4</sup>		42.9	9.5	-42.9		45.0
	NI 70 - Hospital admissions (injuries)		113.4	125.2	182.2		87.0
	CT_7 - Feel safe most days in the area where they live	School-based	70	68	62		79
		Home-based	74		62		84
	CT_7 - Feel safe most days getting to and from school	School-based	67	67	63		76
		Home-based	63		63		78
	CT_8 - Rate of CYP who are victims of crime <sup>2</sup>		25.9	23.1	37.8		10.3

<sup>1</sup> Data only available at District level. <sup>2</sup> Data only available at CDRP level. <sup>3</sup> Data shown is for 2005-7. <sup>4</sup> Data shown is for 2006/07. 05/06.

## Performance Summary for Swale Rural

The chart below provides a summary of the relative strengths and weaknesses in respect of performance for this Local Children's Service Partnership (LCSP). The local result for each indicator is shown as a circle, diamond or square according to performance, against the range of results for the county which is shown as a bar.

### LCSP Performance:

- Lower quartile
- ◆ 'Average'
- Upper quartile

The data shown relates to 2007/08 unless otherwise indicated.

LCSP performance is graded as 'average' if it lies between the 25th and 75th percentile (i.e. is not either lower or upper quartile).



CYPP Priority	Indicator	Local Value	Kent Value	LCSP Worst	LCSP Best
Poverty	NI 102 - FSM achievement gap (Key Stage 2) <i>School-based</i>	33	30	39	15
	NI 102 - FSM achievement gap (Key Stage 2) <i>Home-based</i>	26		42	18
	NI 102 - FSM achievement gap (Key Stage 4) <i>School-based</i>	38.4	31.9	50.1	4.3
Resilience & Health	NI 55 - Obesity in reception year - School-based	10.0	9.0	12.0	5.6
	NI 112 - Under 18 conception rate <sup>1 3</sup>	1.7%	-11.6%	14.2%	-23.7%
	CT_1 - Sad or depressed most days <i>School-based</i>	12	10	18	4
	CT_1 - Sad or depressed most days <i>Home-based</i>	10		17	6
	CT_2 - Young people getting drunk at least once a week <i>School-based</i>	10	9	13	5
	CT_2 - Young people getting drunk at least once a week <i>Home-based</i>	9		13	5
Parenting	NI 32 - Repeat incidents of domestic abuse <sup>2</sup>	23.5	23.1	25.0	20.5
	KCC_2010 - Parents supported through Children's Centres	0	16,198	0	3,113
	CT_4 - MMR immunisations by 2nd birthday <sup>1</sup>	85	86	80	91
Vulnerable Children	NI 104 - SEN/non-SEN gap (Key Stage 2) <i>School-based</i>	53		64	45
	NI 104 - SEN/non-SEN gap (Key Stage 2) <i>Home-based</i>	53		64	44
	NI 105 - SEN/non-SEN gap (Key Stage 4) <i>School-based</i>	53.1	47.3	60.3	17.2
	PAF - Health checks and dental checks for LAC <sup>1</sup>	64	60	41	89
Things to Do	NI 111 - First time entrants to the Youth Justice System <sup>1</sup>	12.0	16.6	23.1	6.6
	CT_6 - Have their say at school/college <i>School-based</i>	61	68	59	84
	CT_6 - Have their say at school/college <i>Home-based</i>	68		62	80
	CT_6 - Have their say in their local area <i>School-based</i>	34	36	27	42
	CT_6 - Have their say in their local area <i>Home-based</i>	37		28	46
	CT_5 - Barriers to activities - Cost	33	32	44	21
	CT_5 - Barriers to activities - Activity is not available locally	24	24	35	13
	CT_5 - Barriers to activities - Lack of transport	19	21	28	17
Engagement & Achievement	NI 117 - 16-18 year olds NEET <sup>1</sup>	9.7	5.2	9.7	2.2
	NI 78 - 5+ A*- C GCSEs inc. English and Maths (Floor) <i>School-based</i>	1/3	29	100	0
	NI 72 - 78+ points across the EYFS <i>School-based</i>	47	46	33	69
	NI 72 - 78+ points across the EYFS <i>Home-based</i>	47		34	67
	NI 73 - Level 4+ in both English and Maths at Key Stage 2 <i>School-based</i>	68	69	54	81
	NI 73 - Level 4+ in both English and Maths at Key Stage 2 <i>Home-based</i>	65		56	80
	NI 75 - 5+ A*- C GCSEs incl. English and Maths <i>School-based</i>	47.1	49.5	17.6	75.9
	NI 75 - 5+ A*- C GCSEs incl. English and Maths <i>Home-based</i>	50.6		39.1	66.7
	NI 79 - Level 2 qualification by age 19 <sup>1 4</sup> <i>School-based</i>	65.3	71.2	63.8	80.8
	NI 80 - Level 3 qualification by age 19 <sup>1 4</sup> <i>School-based</i>	38.7	47.2	35.5	65.6
	NI 87 - Secondary school persistent absence rate <i>School-based</i>	6.8	6.0	13.6	2.5
	Safety	NI 92 - Narrowing EYFS gap <i>School-based</i>	32.6	32.0	39.7
NI 92 - Narrowing EYFS gap <i>Home-based</i>		31.0		37.8	26.8
NI 174 - Skills gap in the current workforce <sup>1</sup>		13.1	14.6	21.3	9.4
NI 48 - Road traffic accidents <sup>1 4</sup>		23.8	9.5	-42.9	45.0
NI 70 - Hospital admissions (injuries)		132.6	125.2	182.2	87.0
CT_7 - Feel safe most days in the area where they live <i>School-based</i>		64	68	62	79
CT_7 - Feel safe most days in the area where they live <i>Home-based</i>		67		62	84
CT_7 - Feel safe most days getting to and from school <i>School-based</i>		64	67	63	76
CT_7 - Feel safe most days getting to and from school <i>Home-based</i>	63		63	78	
CT_8 - Rate of CYP who are victims of crime <sup>2</sup>	24.7	23.1	37.8	10.3	

<sup>1</sup> Data only available at District level. <sup>2</sup> Data only available at CDRP level. <sup>3</sup> Data shown is for 2005-7. <sup>4</sup> Data shown is for 2006/07.

## Performance Summary for Swale Urban

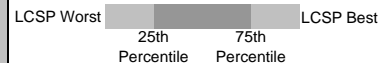
The chart below provides a summary of the relative strengths and weaknesses in respect of performance for this Local Children's Service Partnership (LCSP). The local result for each indicator is shown as a circle, diamond or square according to performance, against the range of results for the county which is shown as a bar.

### LCSP Performance:

- Lower quartile
- ◆ 'Average'
- Upper quartile

The data shown relates to 2007/08 unless otherwise indicated.

LCSP performance is graded as 'average' if it lies between the 25th and 75th percentile (i.e. is not either lower or upper quartile).



CYPP Priority	Indicator		Local Value	Kent Value	LCSP Worst		LCSP Best
Poverty	NI 102 - FSM achievement gap (Key Stage 2)	School-based	25	30	39		15
		Home-based	28		42		18
	NI 102 - FSM achievement gap (Key Stage 4)	School-based	28.4	31.9	50.1		4.3
Resilience & Health	NI 55 - Obesity in reception year - School-based		8.2	9.0	12.0		5.6
	NI 112 - Under 18 conception rate <sup>1 3</sup>		1.7%	-11.6%	14.2%		-23.7%
	CT_1 - Sad or depressed most days	School-based	7	10	18		4
		Home-based	10		17		6
	CT_2 - Young people getting drunk at least once a week	School-based	5	9	13		5
		Home-based	5		13		5
Parenting	NI 32 - Repeat incidents of domestic abuse <sup>2</sup>		23.5	23.1	25.0		20.5
	KCC_2010 - Parents supported through Children's Centres		946	16,198	0		3,113
	CT_4 - MMR immunisations by 2nd birthday <sup>1</sup>		85	86	80		91
Vulnerable Children	NI 104 - SEN/non-SEN gap (Key Stage 2)	School-based	53		64		45
		Home-based	53		64		44
	NI 105 - SEN/non-SEN gap (Key Stage 4)	School-based	41.1	47.3	60.3		17.2
	PAF - Health checks and dental checks for LAC <sup>1</sup>		64	60	41		89
Things to Do	NI 111 - First time entrants to the Youth Justice System <sup>1</sup>		12.0	16.6	23.1		6.6
	CT_6 - Have their say at school/college	School-based	84	68	59		84
		Home-based	76		62		80
	CT_6 - Have their say in their local area	School-based	40	36	27		42
		Home-based	39		28		46
	CT_5 - Barriers to activities - Cost		34	32	44		21
	CT_5 - Barriers to activities - Activity is not available locally		26	24	35		13
Engagement & Achievement	CT_5 - Barriers to activities - Lack of transport		23	21	28		17
	NI 117 - 16-18 year olds NEET <sup>1</sup>		9.7	5.2	9.7		2.2
	NI 78 - 5+ A*- C GCSEs inc. English and Maths (Floor)	School-based	1/5	29	100		0
		Home-based	40	46	33		69
	NI 72 - 78+ points across the EYFS	School-based	41		34		67
		Home-based	54	69	54		81
	NI 73 - Level 4+ in both English and Maths at Key Stage 2	School-based	56		56		80
		Home-based	56		56		80
	NI 75 - 5+ A*- C GCSEs incl. English and Maths	School-based	43.5	49.5	17.6		75.9
		Home-based	39.1		39.1		66.7
	NI 79 - Level 2 qualification by age 19 <sup>1 4</sup>	School-based	65.3	71.2	63.8		80.8
	NI 80 - Level 3 qualification by age 19 <sup>1 4</sup>	School-based	38.7	47.2	35.5		65.6
	NI 87 - Secondary school persistent absence rate	School-based	8.7	6.0	13.6		2.5
Safety	NI 92 - Narrowing EYFS gap	School-based	26.2	32.0	39.7		25.0
		Home-based	31.9		37.8		26.8
	NI 174 - Skills gap in the current workforce <sup>1</sup>		13.1	14.6	21.3		9.4
	NI 48 - Road traffic accidents <sup>1 4</sup>		23.8	9.5	-42.9		45.0
	NI 70 - Hospital admissions (injuries)		166.9	125.2	182.2		87.0
	CT_7 - Feel safe most days in the area where they live	School-based	66	68	62		79
		Home-based	63		62		84
	CT_7 - Feel safe most days getting to and from school	School-based	64	67	63		76
	Home-based	64		63		78	
CT_8 - Rate of CYP who are victims of crime <sup>2</sup>		24.7	23.1	37.8		10.3	

<sup>1</sup> Data only available at District level. <sup>2</sup> Data only available at CDRP level. <sup>3</sup> Data shown is for 2005-7. <sup>4</sup> Data shown is for 2006/07.

# Performance Summary for Swanley & District

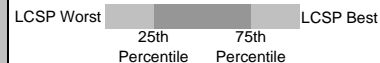
The chart below provides a summary of the relative strengths and weaknesses in respect of performance for this Local Children's Service Partnership (LCSP). The local result for each indicator is shown as a circle, diamond or square according to performance, against the range of results for the county which is shown as a bar.

### LCSP Performance:

- Lower quartile
- ◆ 'Average'
- Upper quartile

The data shown relates to 2007/08 unless otherwise indicated.

LCSP performance is graded as 'average' if it lies between the 25th and 75th percentile (i.e. is not either lower or upper quartile).



CYPP Priority	Indicator		Local Value	Kent Value	LCSP Worst		LCSP Best
Poverty	NI 102 - FSM achievement gap (Key Stage 2)	School-based	25	30	39		15
		Home-based	33		42		18
	NI 102 - FSM achievement gap (Key Stage 4)	School-based	24.4	31.9	50.1		4.3
Resilience & Health	NI 55 - Obesity in reception year - School-based		11.3	9.0	12.0		5.6
	NI 112 - Under 18 conception rate <sup>1 3</sup>		-4.0%	-11.6%	14.2%		-23.7%
	CT_1 - Sad or depressed most days	School-based	16	10	18		4
		Home-based	10		17		6
	CT_2 - Young people getting drunk at least once a week	School-based	8	9	13		5
		Home-based	7		13		5
Parenting	NI 32 - Repeat incidents of domestic abuse <sup>2</sup>		20.5	23.1	25.0		20.5
	KCC_2010 - Parents supported through Children's Centres		0	16,198	0		3,113
	CT_4 - MMR immunisations by 2nd birthday <sup>1</sup>		82	86	80		91
Vulnerable Children	NI 104 - SEN/non-SEN gap (Key Stage 2)	School-based	45		64		45
		Home-based	45		64		44
	NI 105 - SEN/non-SEN gap (Key Stage 4)	School-based	28.6	47.3	60.3		17.2
	PAF - Health checks and dental checks for LAC <sup>1</sup>		60	60	41		89
Things to Do	NI 111 - First time entrants to the Youth Justice System <sup>1</sup>		8.0	16.6	23.1		6.6
	CT_6 - Have their say at school/college	School-based	60	68	59		84
		Home-based	71		62		80
	CT_6 - Have their say in their local area	School-based	44	36	27		42
		Home-based	40		28		46
	CT_5 - Barriers to activities - Cost		34	32	44		21
CT_5 - Barriers to activities - Activity is not available locally		26	24	35		13	
CT_5 - Barriers to activities - Lack of transport		20	21	28		17	
Engagement & Achievement	NI 117 - 16-18 year olds NEET <sup>1 8</sup>		2.2	5.2	9.7		2.2
	NI 78 - 5+ A*- C GCSEs inc. English and Maths (Floor)	School-based	1/2	29	100		0
		School-based	47	46	33		69
	NI 72 - 78+ points across the EYFS	Home-based	49		34		67
	NI 73 - Level 4+ in both English and Maths at Key Stage 2	School-based	71	69	54		81
		Home-based	72		56		80
	NI 75 - 5+ A*- C GCSEs incl. English and Maths	School-based	33.8	49.5	17.6		75.9
		Home-based	56.1		39.1		66.7
	NI 79 - Level 2 qualification by age 19 <sup>1 4</sup>	School-based	66.6	71.2	63.8		80.8
	NI 80 - Level 3 qualification by age 19 <sup>1 4</sup>	School-based	43.0	47.2	35.5		65.6
	NI 87 - Secondary school persistent absence rate	School-based	13.6	6.0	13.6		2.5
NI 92 - Narrowing EYFS gap	School-based	26.4	32.0	39.7		25.0	
	Home-based	31.2		37.8		26.8	
NI 174 - Skills gap in the current workforce <sup>1</sup>		9.7	14.6	21.3		9.4	
Safety	NI 48 - Road traffic accidents <sup>1 4</sup>		21.4	9.5	-42.9		45.0
	NI 70 - Hospital admissions (injuries)		102.7	125.2	182.2		87.0
	CT_7 - Feel safe most days in the area where they live	School-based	63	68	62		79
		Home-based	66		62		84
	CT_7 - Feel safe most days getting to and from school	School-based	63	67	63		76
		Home-based	71		63		78
CT_8 - Rate of CYP who are victims of crime <sup>2</sup>		10.3	23.1	37.8		10.3	

<sup>1</sup> Data only available at District level. <sup>2</sup> Data only available at CDRP level. <sup>3</sup> Data shown is for 2005-7. <sup>4</sup> Data shown is for 2006/07.

# Performance Summary for Thanet 1

The chart below provides a summary of the relative strengths and weaknesses in respect of performance for this Local Children's Service Partnership (LCSP). The local result for each indicator is shown as a circle, diamond or square according to performance, against the range of results for the county which is shown as a bar.

### LCSP Performance:

- Lower quartile
- ◆ 'Average'
- Upper quartile

The data shown relates to 2007/08 unless otherwise indicated.

LCSP performance is graded as 'average' if it lies between the 25th and 75th percentile (i.e. is not either lower or upper quartile).



CYPP Priority	Indicator		Local Value	Kent Value	LCSP Worst		LCSP Best
Poverty	NI 102 - FSM achievement gap (Key Stage 2)	School-based	27	30	39		15
	NI 102 - FSM achievement gap (Key Stage 4)	Home-based	27	30	42		18
Resilience & Health	NI 55 - Obesity in reception year - School-based	School-based	21.8	31.9	50.1		4.3
	NI 112 - Under 18 conception rate <sup>1 3</sup>		11.3	9.0	12.0	●	5.6
	CT_1 - Sad or depressed most days	School-based	-8.8%	-11.6%	14.2%	◆	-23.7%
		Home-based	10	10	18		4
	CT_2 - Young people getting drunk at least once a week	School-based	10	10	17	◆	6
		Home-based	13	9	13	●	5
Parenting	NI 32 - Repeat incidents of domestic abuse <sup>2</sup>		13	13	13	●	5
	KCC_2010 - Parents supported through Children's Centres		24.3	23.1	25.0	●	20.5
	CT_4 - MMR immunisations by 2nd birthday <sup>1</sup>		3113	16,198	0	■	3,113
Vulnerable Children	NI 104 - SEN/non-SEN gap (Key Stage 2)	School-based	80	86	80	●	91
		Home-based	59	64	64	●	45
	NI 105 - SEN/non-SEN gap (Key Stage 4)	School-based	59	64	64	●	44
	PAF - Health checks and dental checks for LAC <sup>1</sup>		25.9	47.3	60.3	■	17.2
Things to Do	NI 111 - First time entrants to the Youth Justice System <sup>1</sup>		75	60	41	◆	89
	CT_6 - Have their say at school/college	School-based	23.1	16.6	23.1	●	6.6
		Home-based	61	68	59	◆	84
	CT_6 - Have their say in their local area	School-based	67	62	62	◆	80
		Home-based	36	36	27	◆	42
	CT_5 - Barriers to activities - Cost		37	28	28	◆	46
	CT_5 - Barriers to activities - Activity is not available locally		33	32	44	◆	21
	CT_5 - Barriers to activities - Lack of transport		25	24	35	◆	13
Engagement & Achievement	NI 117 - 16-18 year olds NEET <sup>1</sup>		21	21	28	◆	17
	NI 78 - 5+ A*- C GCSEs inc. English and Maths (Floor)	School-based	7.8	5.2	9.7	●	2.2
	NI 72 - 78+ points across the EYFS	School-based	2/3	29	100	◆	0
		Home-based	33	46	33	●	69
	NI 73 - Level 4+ in both English and Maths at Key Stage 2	School-based	34	34	34	●	67
		Home-based	62	69	54	●	81
	NI 75 - 5+ A*- C GCSEs incl. English and Maths	School-based	63	56	56	●	80
		Home-based	23.7	49.5	17.6	●	75.9
	NI 79 - Level 2 qualification by age 19 <sup>1 4</sup>	School-based	40.2	39.1	39.1	●	66.7
	NI 80 - Level 3 qualification by age 19 <sup>1 4</sup>	School-based	63.8	71.2	63.8	●	80.8
	NI 87 - Secondary school persistent absence rate	School-based	37.6	47.2	35.5	●	65.6
Safety	NI 92 - Narrowing EYFS gap	School-based	11.6	6.0	13.6	●	2.5
		Home-based	25.9	32.0	39.7	■	25.0
	NI 174 - Skills gap in the current workforce <sup>1</sup>	School-based	28.7	37.8	37.8	◆	26.8
	NI 48 - Road traffic accidents <sup>1 4</sup>		19.0	14.6	21.3	●	9.4
	NI 70 - Hospital admissions (injuries)		0.0	9.5	-42.9	◆	45.0
	CT_7 - Feel safe most days in the area where they live	School-based	129.2	125.2	182.2	◆	87.0
Safety	CT_7 - Feel safe most days getting to and from school	School-based	66	68	62	◆	79
		Home-based	66	62	62	●	84
	CT_8 - Rate of CYP who are victims of crime <sup>2</sup>	School-based	67	67	63	◆	76
		Home-based	67	63	63	◆	78

<sup>1</sup> Data only available at District level. <sup>2</sup> Data only available at CDRP level. <sup>3</sup> Data shown is for 2005-7. <sup>4</sup> Data shown is for 2006/07.



## Performance Summary for Thanet 2

The chart below provides a summary of the relative strengths and weaknesses in respect of performance for this Local Children's Service Partnership (LCSP). The local result for each indicator is shown as a circle, diamond or square according to performance, against the range of results for the county which is shown as a bar.

### LCSP Performance:

- Lower quartile
- ◆ 'Average'
- Upper quartile

The data shown relates to 2007/08 unless otherwise indicated.

LCSP performance is graded as 'average' if it lies between the 25th and 75th percentile (i.e. is not either lower or upper quartile).



CYPP Priority	Indicator		Local Value	Kent Value	LCSP Worst		LCSP Best
Poverty	NI 102 - FSM achievement gap (Key Stage 2)	School-based	26	30	39		15
		Home-based	27		42		18
	NI 102 - FSM achievement gap (Key Stage 4)	School-based	20.4	31.9	50.1		4.3
Resilience & Health	NI 55 - Obesity in reception year - School-based		7.8	9.0	12.0		5.6
	NI 112 - Under 18 conception rate <sup>1 3</sup>		-8.8%	-11.6%	14.2%		-23.7%
	CT_1 - Sad or depressed most days	School-based	8	10	18		4
		Home-based	9		17		6
	CT_2 - Young people getting drunk at least once a week	School-based	11	9	13		5
		Home-based	11		13		5
Parenting	NI 32 - Repeat incidents of domestic abuse <sup>2</sup>		24.3	23.1	25.0		20.5
	KCC_2010 - Parents supported through Children's Centres		715	16,198	0		3,113
	CT_4 - MMR immunisations by 2nd birthday <sup>1</sup>		80	86	80		91
Vulnerable Children	NI 104 - SEN/non-SEN gap (Key Stage 2)	School-based	52		64		45
		Home-based	53		64		44
	NI 105 - SEN/non-SEN gap (Key Stage 4)	School-based	44.9	47.3	60.3		17.2
	PAF - Health checks and dental checks for LAC <sup>1</sup>		75	60	41		89
Things to Do	NI 111 - First time entrants to the Youth Justice System <sup>1</sup>		23.1	16.6	23.1		6.6
	CT_6 - Have their say at school/college	School-based	73	68	59		84
		Home-based	72		62		80
	CT_6 - Have their say in their local area	School-based	38	36	27		42
		Home-based	38		28		46
	CT_5 - Barriers to activities - Cost		35	32	44		21
CT_5 - Barriers to activities - Activity is not available locally		24	24	35		13	
CT_5 - Barriers to activities - Lack of transport		18	21	28		17	
Engagement & Achievement	NI 117 - 16-18 year olds NEET <sup>1</sup>		7.8	5.2	9.7		2.2
	NI 78 - 5+ A*- C GCSEs inc. English and Maths (Floor)	School-based	5/8	29	100		0
		School-based	37	46	33		69
	NI 72 - 78+ points across the EYFS	Home-based	38		34		67
	NI 73 - Level 4+ in both English and Maths at Key Stage 2	School-based	61	69	54		81
		Home-based	60		56		80
	NI 75 - 5+ A*- C GCSEs incl. English and Maths	School-based	47.1	49.5	17.6		75.9
		Home-based	43.4		39.1		66.7
	NI 79 - Level 2 qualification by age 19 <sup>1 4</sup>	School-based	63.8	71.2	63.8		80.8
	NI 80 - Level 3 qualification by age 19 <sup>1 4</sup>	School-based	37.6	47.2	35.5		65.6
NI 87 - Secondary school persistent absence rate	School-based	6.8	6.0	13.6		2.5	
Safety	NI 92 - Narrowing EYFS gap	School-based	32.9	32.0	39.7		25.0
		Home-based	31.3		37.8		26.8
	NI 174 - Skills gap in the current workforce <sup>1</sup>		19.0	14.6	21.3		9.4
	NI 48 - Road traffic accidents <sup>1 4</sup>		0.0	9.5	-42.9		45.0
	NI 70 - Hospital admissions (injuries)		102.0	125.2	182.2		87.0
	CT_7 - Feel safe most days in the area where they live	School-based	68	68	62		79
	Home-based	66		62		84	
CT_7 - Feel safe most days getting to and from school	School-based	68	67	63		76	
	Home-based	67		63		78	
CT_8 - Rate of CYP who are victims of crime <sup>2</sup>		37.8	23.1	37.8		10.3	

<sup>1</sup> Data only available at District level. <sup>2</sup> Data only available at CDRP level. <sup>3</sup> Data shown is for 2005-7. <sup>4</sup> Data shown is for 2006/07.

# Performance Summary for Tonbridge

The chart below provides a summary of the relative strengths and weaknesses in respect of performance for this Local Children's Service Partnership (LCSP). The local result for each indicator is shown as a circle, diamond or square according to performance, against the range of results for the county which is shown as a bar.

### LCSP Performance:

- Lower quartile
- ◆ 'Average'
- Upper quartile

The data shown relates to 2007/08 unless otherwise indicated.

LCSP performance is graded as 'average' if it lies between the 25th and 75th percentile (i.e. is not either lower or upper quartile).



CYPP Priority	Indicator		Local Value	Kent Value	LCSP Worst		LCSP Best
Poverty	NI 102 - FSM achievement gap (Key Stage 2)	School-based	38	30	39	<span style="color: red;">●</span>	15
		Home-based	36		42	<span style="color: red;">●</span>	18
	NI 102 - FSM achievement gap (Key Stage 4)	School-based	33.6	31.9	50.1	<span style="color: black;">◆</span>	4.3
Resilience & Health	NI 55 - Obesity in reception year - School-based		7.4	9.0	12.0	<span style="color: green;">■</span>	5.6
	NI 112 - Under 18 conception rate <sup>1 3</sup>		-1.4%	-11.6%	14.2%	<span style="color: red;">●</span>	-23.7%
	CT_1 - Sad or depressed most days	School-based	8	10	18	<span style="color: black;">◆</span>	4
		Home-based	11		17	<span style="color: red;">●</span>	6
	CT_2 - Young people getting drunk at least once a week	School-based	6	9	13	<span style="color: black;">◆</span>	5
		Home-based	11		13	<span style="color: red;">●</span>	5
Parenting	NI 32 - Repeat incidents of domestic abuse <sup>2</sup>		23.2	23.1	25.0	<span style="color: black;">◆</span>	20.5
	KCC_2010 - Parents supported through Children's Centres		0	16,198	0	<span style="color: black;">◆</span>	3,113
	CT_4 - MMR immunisations by 2nd birthday <sup>1</sup>		87	86	80	<span style="color: black;">◆</span>	91
Vulnerable Children	NI 104 - SEN/non-SEN gap (Key Stage 2)	School-based	55		64	<span style="color: red;">●</span>	45
		Home-based	56		64	<span style="color: red;">●</span>	44
	NI 105 - SEN/non-SEN gap (Key Stage 4)	School-based	49.0	47.3	60.3	<span style="color: black;">◆</span>	17.2
	PAF - Health checks and dental checks for LAC <sup>1</sup>		84	60	41	<span style="color: green;">■</span>	89
Things to Do	NI 111 - First time entrants to the Youth Justice System <sup>1</sup>		8.1	16.6	23.1	<span style="color: green;">■</span>	6.6
	CT_6 - Have their say at school/college	School-based	80	68	59	<span style="color: green;">■</span>	84
		Home-based	76		62	<span style="color: green;">■</span>	80
	CT_6 - Have their say in their local area	School-based	32	36	27	<span style="color: red;">●</span>	42
		Home-based	33		28	<span style="color: black;">◆</span>	46
	CT_5 - Barriers to activities - Cost		40	32	44	<span style="color: red;">●</span>	21
	CT_5 - Barriers to activities - Activity is not available locally		19	24	35	<span style="color: green;">■</span>	13
	CT_5 - Barriers to activities - Lack of transport		20	21	28	<span style="color: green;">■</span>	17
Engagement & Achievement	NI 117 - 16-18 year olds NEET <sup>1 8</sup>		2.2	5.2	9.7	<span style="color: green;">■</span>	2.2
	NI 78 - 5+ A*- C GCSEs incl. English and Maths (Floor)	School-based	1/6	29	100	<span style="color: black;">◆</span>	0
		School-based	59	46	33	<span style="color: green;">■</span>	69
		Home-based	61		34	<span style="color: green;">■</span>	67
	NI 73 - Level 4+ in both English and Maths at Key Stage 2	School-based	70	69	54	<span style="color: black;">◆</span>	81
		Home-based	70		56	<span style="color: black;">◆</span>	80
	NI 75 - 5+ A*- C GCSEs incl. English and Maths	School-based	64.3	49.5	17.6	<span style="color: green;">■</span>	75.9
		Home-based	57.8		39.1	<span style="color: green;">■</span>	66.7
	NI 79 - Level 2 qualification by age 19 <sup>1 4</sup>	School-based	75.4	71.2	63.8	<span style="color: green;">■</span>	80.8
	NI 80 - Level 3 qualification by age 19 <sup>1 4</sup>	School-based	53.4	47.2	35.5	<span style="color: green;">■</span>	65.6
	NI 87 - Secondary school persistent absence rate	School-based	5.0	6.0	13.6	<span style="color: green;">■</span>	2.5
	NI 92 - Narrowing EYFS gap	School-based	35.0	32.0	39.7	<span style="color: red;">●</span>	25.0
		Home-based	32.1		37.8	<span style="color: red;">●</span>	26.8
NI 174 - Skills gap in the current workforce <sup>1</sup>		9.4	14.6	21.3	<span style="color: green;">■</span>	9.4	
Safety	NI 48 - Road traffic accidents <sup>1 4</sup>		45.0	9.5	-42.9	<span style="color: green;">■</span>	45.0
	NI 70 - Hospital admissions (injuries)		175.7	125.2	182.2	<span style="color: red;">●</span>	87.0
	CT_7 - Feel safe most days in the area where they live	School-based	78	68	62	<span style="color: green;">■</span>	79
		Home-based	69		62	<span style="color: black;">◆</span>	84
	CT_7 - Feel safe most days getting to and from school	School-based	72	67	63	<span style="color: green;">■</span>	76
		Home-based	68		63	<span style="color: black;">◆</span>	78
	CT_8 - Rate of CYP who are victims of crime <sup>2</sup>		17.3	23.1	37.8	<span style="color: green;">■</span>	10.3

<sup>1</sup> Data only available at District level. <sup>2</sup> Data only available at CDRP level. <sup>3</sup> Data shown is for 2005-7. <sup>4</sup> Data shown is for 2006/07.



## Performance Summary for Tunbridge Wells

The chart below provides a summary of the relative strengths and weaknesses in respect of performance for this Local Children's Service Partnership (LCSP). The local result for each indicator is shown as a circle, diamond or square according to performance, against the range of results for the county which is shown as a bar.

### LCSP Performance:

- Lower quartile
- ◆ 'Average'
- Upper quartile

The data shown relates to 2007/08 unless otherwise indicated.

LCSP performance is graded as 'average' if it lies between the 25th and 75th percentile (i.e. is not either lower or upper quartile).



CYPP Priority	Indicator		Local Value	Kent Value	LCSP Worst		LCSP Best
Poverty	NI 102 - FSM achievement gap (Key Stage 2)	School-based	35	30	39	<span style="color: red;">●</span>	15
		Home-based	36		42	<span style="color: red;">●</span>	18
	NI 102 - FSM achievement gap (Key Stage 4)	School-based	50.1	31.9	50.1	<span style="color: red;">●</span>	4.3
Resilience & Health	NI 55 - Obesity in reception year - School-based		9.4	9.0	12.0	<span style="color: black;">◆</span>	5.6
	NI 112 - Under 18 conception rate <sup>1 3</sup>		-4.7%	-11.6%	14.2%	<span style="color: black;">◆</span>	-23.7%
	CT_1 - Sad or depressed most days	School-based	11	10	18	<span style="color: black;">◆</span>	4
		Home-based	8		17	<span style="color: black;">◆</span>	6
	CT_2 - Young people getting drunk at least once a week	School-based	9	9	13	<span style="color: black;">◆</span>	5
		Home-based	8		13	<span style="color: black;">◆</span>	5
Parenting	NI 32 - Repeat incidents of domestic abuse <sup>2</sup>		25.0	23.1	25.0	<span style="color: red;">●</span>	20.5
	KCC_2010 - Parents supported through Children's Centres		369	16,198	0	<span style="color: black;">◆</span>	3,113
	CT_4 - MMR immunisations by 2nd birthday <sup>1</sup>		86	86	80	<span style="color: black;">◆</span>	91
Vulnerable Children	NI 104 - SEN/non-SEN gap (Key Stage 2)	School-based	64		64	<span style="color: red;">●</span>	45
		Home-based	64		64	<span style="color: red;">●</span>	44
	NI 105 - SEN/non-SEN gap (Key Stage 4)	School-based	60.3	47.3	60.3	<span style="color: red;">●</span>	17.2
	PAF - Health checks and dental checks for LAC <sup>1</sup>		74	60	41	<span style="color: black;">◆</span>	89
Things to Do	NI 111 - First time entrants to the Youth Justice System <sup>1</sup>		6.6	16.6	23.1	<span style="color: green;">■</span>	6.6
	CT_6 - Have their say at school/college	School-based	63	68	59	<span style="color: black;">◆</span>	84
		Home-based	67		62	<span style="color: black;">◆</span>	80
	CT_6 - Have their say in their local area	School-based	34	36	27	<span style="color: black;">◆</span>	42
		Home-based	33		28	<span style="color: red;">●</span>	46
	CT_5 - Barriers to activities - Cost		28	32	44	<span style="color: green;">■</span>	21
	CT_5 - Barriers to activities - Activity is not available locally		20	24	35	<span style="color: green;">■</span>	13
Engagement & Achievement	CT_5 - Barriers to activities - Lack of transport		17	21	28	<span style="color: green;">■</span>	17
	NI 117 - 16-18 year olds NEET <sup>1 8</sup>		2.2	5.2	9.7	<span style="color: green;">■</span>	2.2
	NI 78 - 5+ A*- C GCSEs incl. English and Maths (Floor)	School-based	1/6	29	100	<span style="color: black;">◆</span>	0
	NI 72 - 78+ points across the EYFS	School-based	53	46	33	<span style="color: green;">■</span>	69
		Home-based	53		34	<span style="color: green;">■</span>	67
	NI 73 - Level 4+ in both English and Maths at Key Stage 2	School-based	73	69	54	<span style="color: green;">■</span>	81
		Home-based	73		56	<span style="color: green;">■</span>	80
	NI 75 - 5+ A*- C GCSEs incl. English and Maths	School-based	75.9	49.5	17.6	<span style="color: green;">■</span>	75.9
		Home-based	66.7		39.1	<span style="color: green;">■</span>	66.7
	NI 79 - Level 2 qualification by age 19 <sup>1 4</sup>	School-based	80.8	71.2	63.8	<span style="color: green;">■</span>	80.8
	NI 80 - Level 3 qualification by age 19 <sup>1 4</sup>	School-based	65.6	47.2	35.5	<span style="color: green;">■</span>	65.6
Safety	NI 87 - Secondary school persistent absence rate	School-based	4.6	6.0	13.6	<span style="color: green;">■</span>	2.5
	NI 92 - Narrowing EYFS gap	School-based	33.6	32.0	39.7	<span style="color: red;">●</span>	25.0
		Home-based	34.2		37.8	<span style="color: red;">●</span>	26.8
	NI 174 - Skills gap in the current workforce <sup>1</sup>		16.6	14.6	21.3	<span style="color: black;">◆</span>	9.4
	NI 48 - Road traffic accidents <sup>1 4</sup>		11.1	9.5	-42.9	<span style="color: black;">◆</span>	45.0
	NI 70 - Hospital admissions (injuries)		182.2	125.2	182.2	<span style="color: red;">●</span>	87.0
	CT_7 - Feel safe most days in the area where they live	School-based	72	68	62	<span style="color: green;">■</span>	79
	Home-based	75		62	<span style="color: green;">■</span>	84	
CT_7 - Feel safe most days getting to and from school	School-based	69	67	63	<span style="color: black;">◆</span>	76	
	Home-based	73		63	<span style="color: green;">■</span>	78	
CT_8 - Rate of CYP who are victims of crime <sup>2</sup>		17.1	23.1	37.8	<span style="color: green;">■</span>	10.3	

<sup>1</sup> Data only available at District level. <sup>2</sup> Data only available at CDRP level. <sup>3</sup> Data shown is for 2005-7. <sup>4</sup> Data shown is for 2006/07.

# Performance Summary for Kent

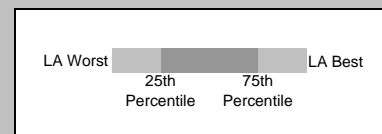
The chart below provides a summary of the relative strengths and weaknesses in respect of Kent's performance. The Kent result for each indicator is shown as a circle, diamond or square according to performance, against the range of results nationally which is shown as a bar.

**Kent Performance:**

- Lower quartile
- ◆ 'Average'
- Upper quartile

The data shown relates to 2007/08 unless otherwise indicated.

Kent's performance is graded as 'average' if it lies between the 25th and 75th percentile (i.e. is not either lower or upper quartile).



CYPP Priority	Indicator	Kent Value	National Value	LA Worst	LA Best
Poverty	NI 81 - Level 3 qualification by the age of 19 gap <sup>1</sup>	31.8	25.4	42.4	0.3
	NI 102 - FSM achievement gap (Key Stage 2) <sup>1</sup>	31	24	37	12
	NI 102 - FSM achievement gap (Key Stage 4)	31.9	27.8	40.1	4.4
	NI 106 - Low income backgrounds progressing to higher education <sup>2</sup>	26.5	19.4	50.0	1.0
	NI 118 - Take up of formal childcare by low-income working families <sup>1</sup>	14	17	7	29
Resilience & Health	NI 55 - Obesity among primary school children in reception year	9.0	9.9 <sup>3</sup>	16.2	5.4
	NI 50 - Emotional health of children	61.1	63.3	55.0	71.2
	NI 112 - Under 18 conception rate	-11.6%	-10.7%	49.1%	-51.9%
	NI 115 - Substance misuse by young people	12.8	10.9	17.7	2.2
Housing	NI 46 - Young offenders access to suitable accommodation	77.0	95.0	72.2	100.0
	NI 147 - Care leavers in suitable accommodation	85.8	88.4	65.8	100.0
Vulnerable Children	NI 99 - Children in care reaching level 4 in English at Key Stage 2 <sup>1</sup>	38	46	0	72
	NI 100 - Children in care reaching level 4 in Maths at Key Stage 2 <sup>1</sup>	31	43	0	67
	NI 104 - SEN/non-SEN gap (Key Stage 2) <sup>1</sup>	52	52	59	38
	NI 105 - SEN/non-SEN gap (Key Stage 4)	47.3	45.3	56.3	28.1
	NI 107 - Key Stage 2 attainment for BME groups - White <sup>1</sup>	66	71	55	81
	NI 107 - Key Stage 2 attainment for BME groups - Mixed <sup>1</sup>	72	71	48	89
	NI 107 - Key Stage 2 attainment for BME groups - Asian <sup>1</sup>	73	67	50	86
	NI 107 - Key Stage 2 attainment for BME groups - Black <sup>1</sup>	68	59	35	80
	NI 107 - Key Stage 2 attainment for BME groups - Chinese & Other <sup>1</sup>	73	82	65	100
	NI 108 - Key Stage 4 attainment for BME groups - White	48.9	48.0	28.8	69.6
	NI 108 - Key Stage 4 attainment for BME groups - Mixed	56.7	47.1	21.1	84.6
	NI 108 - Key Stage 4 attainment for BME groups - Asian	59.8	51.0	25.0	88.7
	NI 108 - Key Stage 4 attainment for BME groups - Black	54.2	40.6	0.0	100.0
	NI 108 - Key Stage 4 attainment for BME groups - Chinese	80.4	84.8	0.0	100.0
NI 148 - Care leavers in employment, education or training	54.7	64.9	0.0	96.2	
Things to Do	NI 110 - Young people's participation in positive activities	59.0	69.5	50.7	100.0
	NI 111 - First time entrants to the Youth Justice System aged 10-17	16.6	18.4	32.0	6.9
Engagement & Achievement	NI 117 - 16-18 year olds who are not in education, employment or training	5.2	6.7	15.0	1.0
	NI 78 - 5+ A*- C GCSEs incl. English and Maths (Floor)	29.0	14.2	55.6	0.0
	NI 45 - Young offenders engagement in suitable EET	74.7	72.4	52.1	92.1
	NI 72 - 78+ points across the Early Years Foundation Stage	46	49	27	65
	NI 73 - Level 4+ in both English and Maths at Key Stage 2 (Threshold)	69	72	61	83
	NI 75 - 5+ A*- C grades GCSEs incl. English and Maths (Threshold)	49.5	47.9	29.3	69.6
	NI 79 - Level 2 qualification by age 19 <sup>1</sup>	71.2	73.9	56.3	96.7
	NI 80 - Level 3 qualification by age 19 <sup>1</sup>	47.2	48.0	28.0	92.1
	NI 87 - Secondary school persistent absence rate	6.0	5.6	11.3	3.4
	NI 92 - Narrowing EYFS gap	32.0	35.6	44.4	24.7
	NI 174 - Skills gap in the current workforce reported by employers	14.6	15.3	22.1	12.3
Safety	NI 48 - Children killed or seriously injured in road traffic accidents <sup>1</sup>	9.5	7.5	-200.0	63.6
	NI 69 - Children who have experienced bullying	46.7	48.0	57.7	29.6
	NI 70 - Hospital admissions (unintentional and deliberate injuries) <sup>1</sup>	125.5	123.1	240.5	62.3

<sup>1</sup> Data shown is for 2006/07. <sup>2</sup> Data shown is for 2005/06. <sup>3</sup> Estimated figure.



## Appendix 6: – Draft Action Plan from CYPP Review 2009: to be completed with partners

Area for development	Some DRAFT New actions For discussion	Existing Activity/ plans in place	Lead for action	Proposed Measurable outcomes/ indicators	End date
Reduce Teenage Conceptions	Secure an independent review of the strategy and related activities to reduce teenage conceptions to identify specific areas for improvement	Joint Area Review Action plan	Richard Murrells	NI 112: Under 18 conception rate	
Participation in positive activities- particularly exploring why year 10s do not appear to be engaged	Conduct qualitative research into why relevant age groups are not participating in positive activities available	LAA Action Plan in place Recommendations of Select Committee	Angela Slaven	NI 110: Young people's participation in positive activities	<b>Sept 2009</b>
Increase in perception of safe environments in local areas and road safety	Partners will review all actions being taken to provide safe environments and roads in Kent and indentify additional actions where required.			CYP Survey: % of children and young people who say they feel safe most days: in the area they live and to and from school  NI48: Children killed or seriously injured in road traffic accidents	
Early Childhood Development Focus on <ul style="list-style-type: none"> <li>• Breast feeding rates</li> <li>• Smoking during pregnancy</li> <li>• Early years foundation stage profile results</li> </ul>		Early Years FSP action plan in place with increased MTP early years funding in 2009.		NI 72: Achievement of at least 78 points across the Early Years Foundation Stage with at least 6 in each of the scales in Personal Social and Emotional Development and Communication, Language and Literacy  NI 53: Prevalence of breastfeeding at 6 – 8	

				weeks from birth	
				Health data: Smoking During pregnancy	
Reduction in Substance Misuse		<p>Select committee recommendations on alcohol use and misuse.</p> <p>Kent Community Alcohol Partnership formed.</p> <p>Range of activity in place through KDAAT and Schools Drug Education Advisors.</p> <p>Substance misuse part of PSHE curriculum</p>		<p>NI115: Substance misuse by young people</p> <p>CYP survey: Percentage of young people getting drunk at least once or twice a week</p>	
Improvements in outcomes for Children and young people who are eligible for free school meals	<p>Develop pilots;</p> <ul style="list-style-type: none"> <li>• Create an accessible menu of services with support available across the full range of family resources- signposting, FLO or PSA support, family Group conferencing.</li> <li>• Addressing non-material hardship: family support and mediation, family learning, PSHE modules to equip with personal skills.</li> <li>• Facilitate co-production: how can services work more effectively together with service users to achieve</li> </ul>	Poverty pilots successful bid for funding		<p>NI81: Inequality gap in the achievement of a Level 3 qualification by the age of 19</p> <p>NI102: Achievement gap between pupils eligible for free school meals and their peers achieving the expected level at Key Stages 2 and 4</p> <p>NI 106: Young people from low income backgrounds progressing to higher education</p>	

	positive social outcomes			CYP Survey: Cuts by FSM show improving outcomes: bullying, feeling safe, enjoying life	
Improved feedback to children and young people to tell them how their views influenced service planning and provision	Participation framework in place with improved feedback identified as key action in underpinning action plan.	Recent progress including Focus group fact sheet and poster developed and distributed.  JAR action plan distribution of JAR feedback achieved.			
Housing: ensuring plans are in place to respond to the needs of vulnerable families and young people	Proposed development of Integrated Housing Strategy through the Kent Economic Board Housing Group with partners across Kent	Supporting People 5 year plan refresh  JAR action plan in place for housing adaptations for children with disabilities		NI 46: Young offenders access to suitable accommodation  NI156: Number of households living in temporary accommodation	

The Strategic Planning and Review Team created this document, June 2009.  
For more information contact Karen Cook  
[karen.cook@kent.gov.uk](mailto:karen.cook@kent.gov.uk)  
Tel: 01622 694613